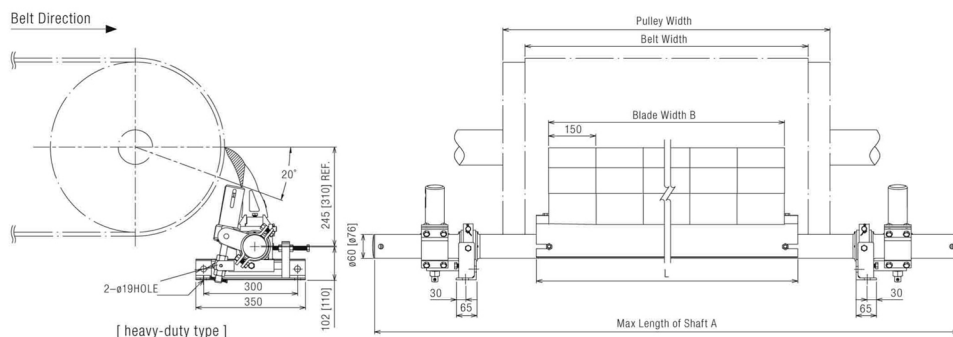
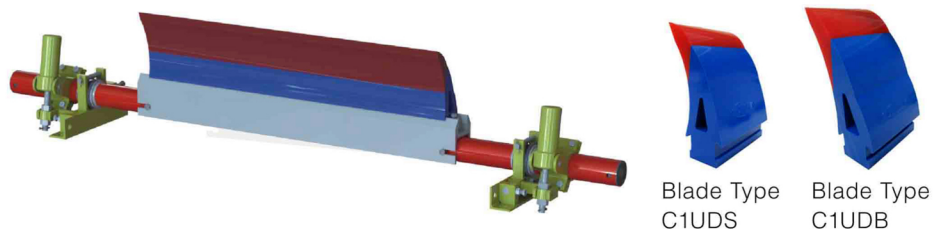


PRIMARY BELT CLEANER – C1UD



FEATURES

EASY VISION

Exclusive double-color blade design provides clear vision of wear situation. Besides of it, pressure indicator shows the contact pressure of blade for timely and effective adjustment to increase scarping performance.

PU BLADE

With low wear and high strength of PU characteristics, blades fit with belt surface to achieve better scarping performance.

NO REMAINING

Streamline shape of back of blade makes no remaining material on blade to keep the good scarping performance.

SPRING TENSIONER

By modular design, spring tensioner is easy to maintain. With automatic compensation function, the spring tensioner helps increase scarping performance.

APPLICATION

Suitable for conveying material, such as coal, coke, sinter, salt, iron ore, fertilizer, limestone, sandstone, sulfur, etc.

Unit: mm [in]

Model	Belt Width	Max Lengh of Shaft A	Blade Width B	L	TIP Q'TY [N]
-060	600 [24]	1650 [65]	450 [17]	530 [20]	3
-065	650 [26]	1750 [69]	450 [17]	530 [20]	3
-075	750 [30]	1800 [71]	600 [23]	680 [26]	4
-080	800 [31]	1900 [75]	600 [23]	680 [26]	4
C1UDS -090	900 [35]	1950 [77]	750 [29]	830 [28]	5
-100	1000 [40]	2100 [83]	900 [35]	980 [38]	6
-105	1050 [42]	2150 [85]	900 [35]	980 [38]	6
-120	1200 [48]	2250 [89]	1050 [41]	1130 [44]	7
-140	1400 [54]	2450 [96]	1200 [47]	1280 [50]	8
▲ -160	1600 [63]	2750 [108]	1350 [53]	1430 [56]	9
C1UDB ▲ -180	1800 [72]	2950 [116]	1500 [59]	1580 [62]	10
▲ -200	2000 [78]	3150 [124]	1650 [64]	1730 [68]	11

▲ heavy-duty type