



Gumi Tel-Aviv^{LTD}
מפיץ בלעדי בישראל

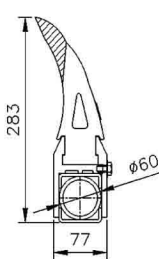
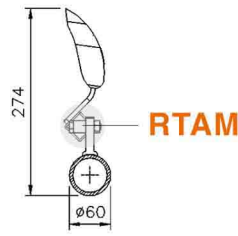
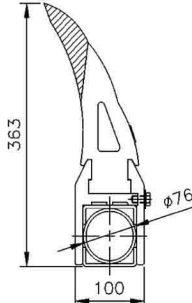
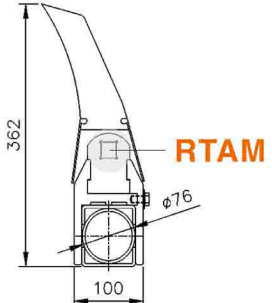


PRIMARY BELT CLEANER

The function of belt cleaner is to remove the remaining material on the belt surface. An excellent belt cleaner not only minimizes the waste of material, but also keeps the environment clean. **Primary belt cleaners are specialized to scrape 75-85% surface material; therefore, how to choose suitable primary belt cleaner is important.** Jim Way develops a series of primary belt cleaners based on belt width, pulley diameter, belt speed, conveying material and environment temperature.

BELT WIDTH	PULLEY DIAMETER				Unit: mm
	300~400	450~600	600~800	800~1000	1000~1200
300~400	1 or 2	1 or 2	–	–	–
400~500	1 or 2	1 or 2	–	–	–
500~650	1 or 2	1 or 2	1 or 2	–	–
650~800	1 or 2	1 or 2	1 or 2	–	–
800~1000	1 or 2	1 or 2	1 or 2	–	–
1000~1200	1 or 2	1 or 2	1 or 2	3 or 4	–
1200~1400	1 or 2	1 or 2	1 or 2	3 or 4	3 or 4
1400~1600	–	1 or 2	1 or 2	3 or 4	3 or 4
1600~1800	–	1 or 2	1 or 2	3 or 4	3 or 4
1800~2000	–	–	1 or 2	3 or 4	3 or 4

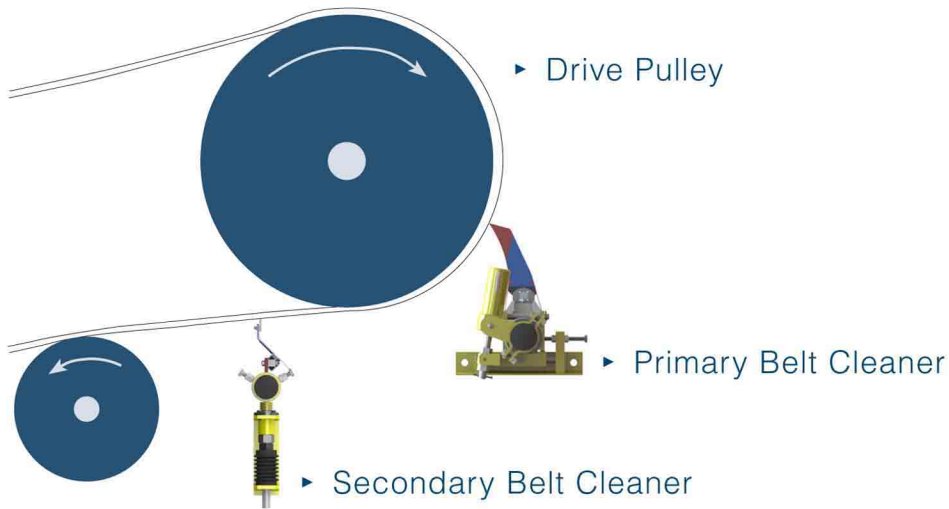
THE TYPE AND SIZE OF BLADES

TYPE	1. C1UDS	2. PRUS	3. C1UDB	4. CRT1BA
SIZE				
BELT SPEED	≤ 3.5 m/s	≤ 4 m/s	≤ 6 m/s	≤ 7 m/s





RTAM Rubber Torsion Arm Mounting



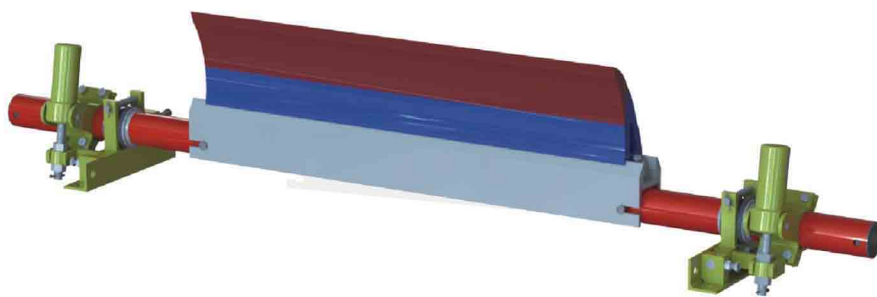
Type 2 and 4's blades with RTAM



POLYURETHANE BLADES

	CONVEYING MATERIAL	ENVIRONMENT TEMPERATURE
 <p>Standard</p>	Coal, Coke, Iron ore, Sandstone, etc.	$\leq 70\text{ }^{\circ}\text{C}$
 <p>With RTAM</p>	Coal, Coke, Salt, Fertilizer, Sulfur, Limestone, Sandstone, etc.	$\leq 70\text{ }^{\circ}\text{C}$
 <p>Corrosion-Resistant</p>	Concrete, Asphalt, Slag, Fertilizer, Salt, Sulfur and Corrosive Materials.	$\leq 120\text{ }^{\circ}\text{C}$
 <p>Special for Conveying Food Material</p>	Food Raw Material	$\leq 70\text{ }^{\circ}\text{C}$

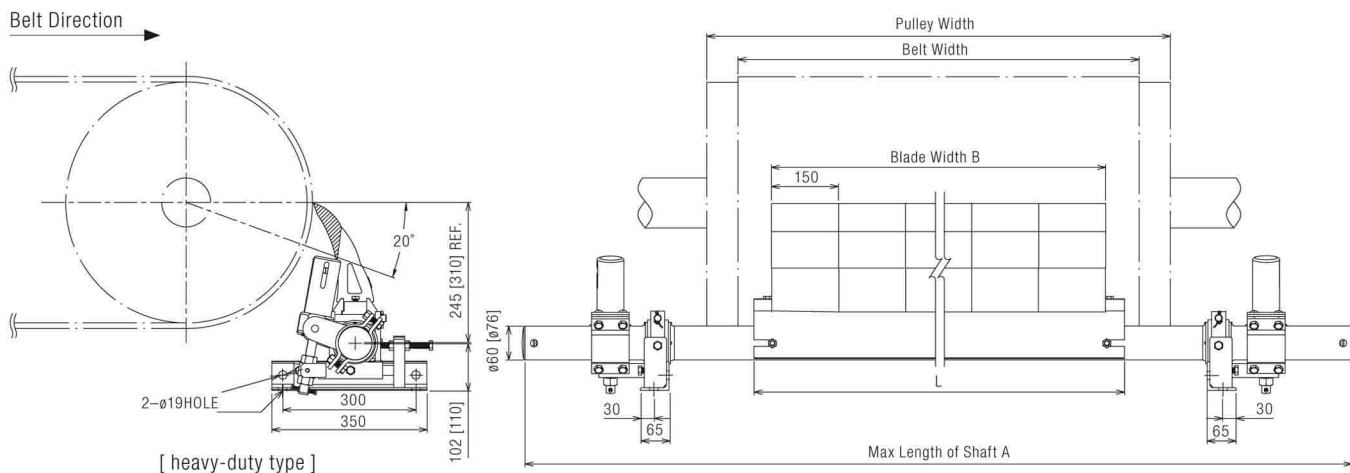
PRIMARY BELT CLEANER – C1UD



Blade Type
C1UDS



Blade Type
C1UDB



Model	Belt Width	Max Length of Shaft A	Blade Width B
-060	600 [24]	1650 [65]	450 [17]
-065	650 [26]	1750 [69]	450 [17]
-075	750 [30]	1800 [71]	600 [23]
-080	800 [31]	1900 [75]	600 [23]
C1UDS -090	900 [35]	1950 [77]	750 [29]
-100	1000 [40]	2100 [83]	900 [35]
-105	1050 [42]	2150 [85]	900 [35]
-120	1200 [48]	2250 [89]	1050 [41]
-140	1400 [54]	2450 [96]	1200 [47]
▲ -160	1600 [63]	2750 [108]	1350 [53]
C1UDB ▲ -180	1800 [72]	2950 [116]	1500 [59]
▲ -200	2000 [78]	3150 [124]	1650 [64]

▲ heavy-duty type

FEATURES

EASY VISION

Exclusive double-color blade design provides clear vision of wear situation. Besides of it, pressure indicator shows the contact pressure of blade for timely and effective adjustment to increase scarping performance.

PU BLADE

With low wear and high strength of PU characteristics, blades fit with belt surface to achieve better scarping performance.

NO REMAINING

Streamline shape of back of blade makes no remaining material on blade to keep the good scarping performance.

SPRING TENSIONER

By modular design, spring tensioner is easy to maintain. With automatic compensation function, the spring tensioner helps increase scarping performance.

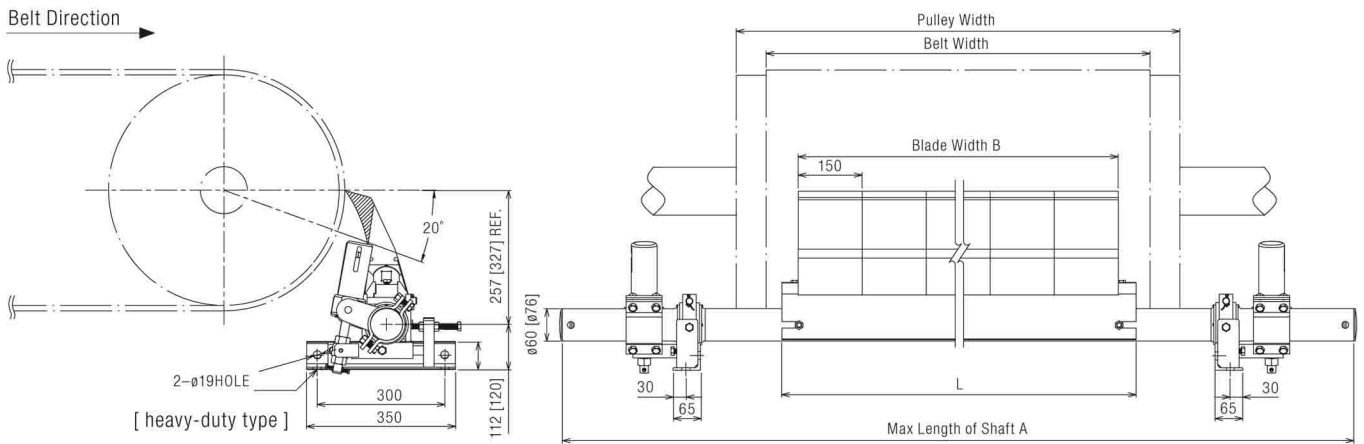
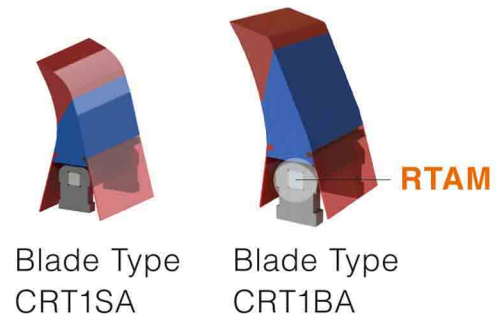
APPLICATION

Suitable for conveying material, such as coal, coke, sinter, salt, iron ore, fertilizer, limestone, sandstone, sulfur, etc.

Unit: mm [in]

L	TIP Q'TY [N]
530 [20]	3
530 [20]	3
680 [26]	4
680 [26]	4
830 [28]	5
980 [38]	6
980 [38]	6
1130 [44]	7
1280 [50]	8
1430 [56]	9
1580 [62]	10
1730 [68]	11

PRIMARY BELT CLEANER – CRT1



Model	Belt Width	Max Length of Shaft A	Blade Width B
-060	600 [24]	1650 [65]	450 [17]
-065	650 [26]	1750 [69]	450 [17]
-075	750 [30]	1800 [71]	600 [23]
-080	800 [31]	1900 [75]	600 [23]
CRT1SA -090	900 [35]	1950 [77]	750 [29]
-100	1000 [40]	2100 [83]	900 [35]
-105	1050 [42]	2150 [85]	900 [35]
-120	1200 [48]	2250 [89]	1050 [41]
-140	1400 [54]	2450 [96]	1200 [47]
▲ -160	1600 [63]	2750 [108]	1350 [53]
CRT1BA ▲ -180	1800 [72]	2950 [116]	1500 [59]
▲ -200	2000 [78]	3150 [124]	1650 [64]

▲ heavy-duty type

FEATURES

EACH BLADE WITH RTAM

Each blade with their own RTAM constantly contacts with belt under suitable pressure, and fits with belt surface to achieve better scraping performance.

RTAM

RTAM can avoid belt from damage of blade by absorbing external force.

SPECIAL FOR HIGH LOADING AND HIGH SPEED BELT CONVEYOR

Combined with RTAM, the low friction coefficient, low wear and high strength blade is priority option.

EASY

By modular design, it is easy to install and maintain.

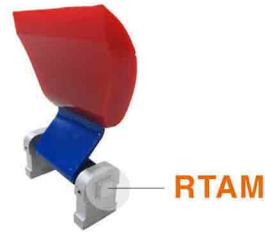
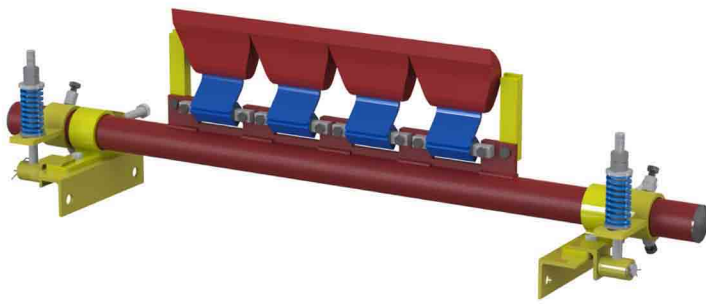
APPLICATION

Suitable for conveying material, such as coal, coke, sinter, salt, iron ore, fertilizer, limestone, sandstone, sulfur, etc.

Unit: mm [in]

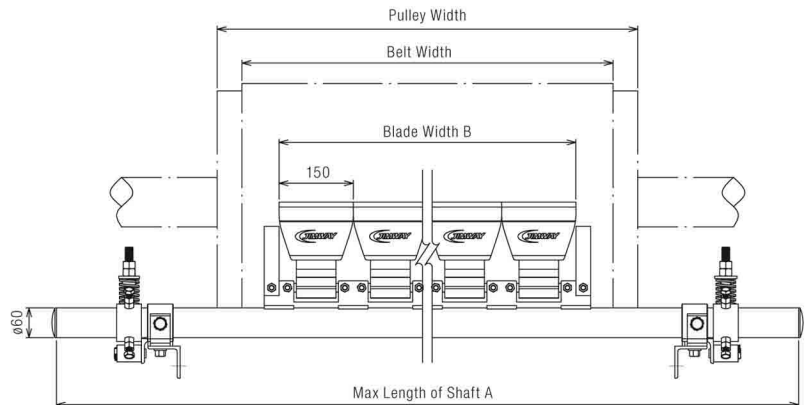
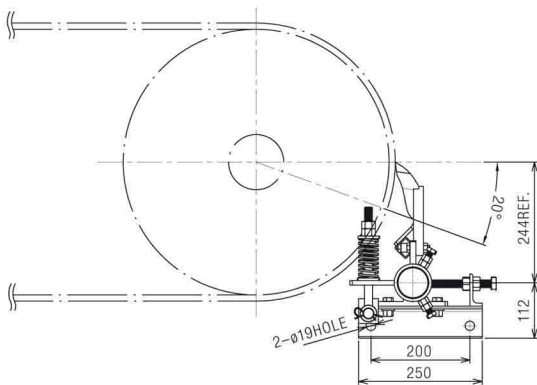
L	TIP Q'TY [N]
530 [20]	3
530 [20]	3
680 [26]	4
680 [26]	4
830 [28]	5
980 [38]	6
980 [38]	6
1130 [44]	7
1280 [50]	8
1430 [56]	9
1580 [62]	10
1730 [68]	11

PRIMARY BELT CLEANER – PRUS



Blade Type
PRUS

Belt Direction →



Model	Belt Width	Max Length of Shaft A	Blade Width B
-060	600 [24]	1650 [65]	450 [17]
-065	650 [26]	1750 [69]	450 [17]
-075	750 [30]	1800 [71]	600 [23]
-080	800 [31]	1900 [75]	600 [23]
-090	900 [35]	1950 [77]	750 [29]
PRUS -100	1000 [40]	2100 [83]	900 [35]
-105	1050 [42]	2150 [85]	900 [35]
-120	1200 [48]	2250 [89]	1050 [41]
-140	1400 [54]	2450 [96]	1200 [47]
-160	1600 [63]	2750 [108]	1350 [53]
-180	1800 [72]	2950 [116]	1500 [59]
-200	2000 [78]	3150 [124]	1650 [64]

FEATURES

SPECIAL-DESIGN BLADE

The blade is lighter, cost-saving and easy to maintain.

EACH BLADE WITH RTAM

Each blade with their own RTAM constantly contacts with belt under suitable pressure, and fits with belt surface to achieve better scraping performance.

RTAM

RTAM can avoid belt from damage of blade by absorbing external force.

SAVE COST

Simple spring tensioners are cost-saving and suitable for general speed belt conveyor.

APPLICATION

Suitable for conveying material, such as coal, coke, salt, fertilizer, limestone, sandstone, sulfur, etc.

Unit: mm [in]

TIP Q'TY [N]

3

3

4

4

5

6

6

7

8




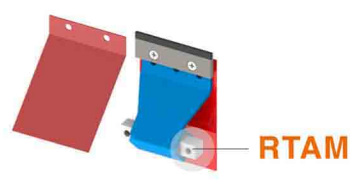
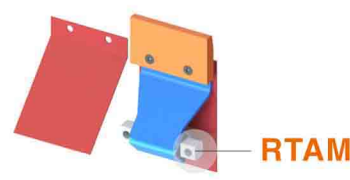




9

10

11

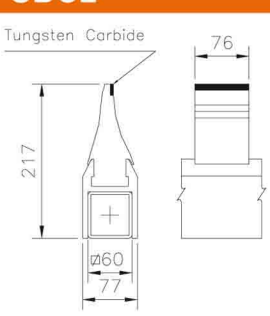
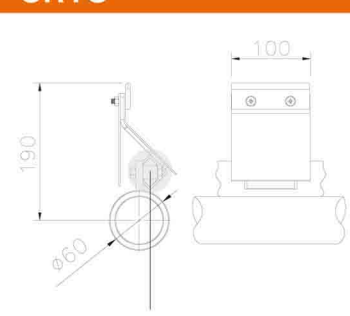
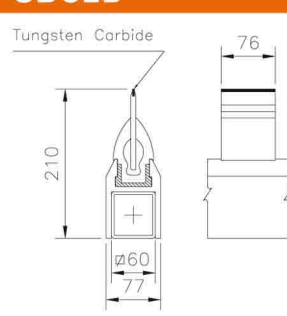
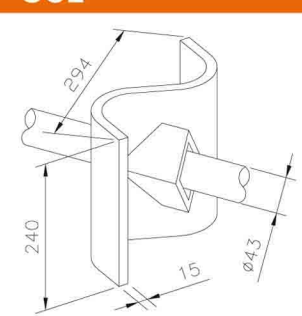
SECONDARY BELT CLEANER

Secondary belt cleaners are for the purpose of removing the rest surface material afterward. Jim Way develops a series of secondary belt cleaners to help customers achieve economical efficiency in different applications.

BELT CLEANER		BLADE	
SBC2		Tungsten Carbide	
SRTS		SRTS – Tungsten Carbide	
		SRUS – PU	
SBC2D		Tungsten Carbide	
SC2		SBR Rubber	

BLADES

Unit: mm

SBC2	SRTS	SBC2D	SC2
 <p>Tungsten Carbide</p>	 <p>RTAM</p>	 <p>Tungsten Carbide</p>	

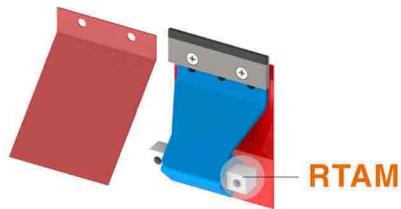
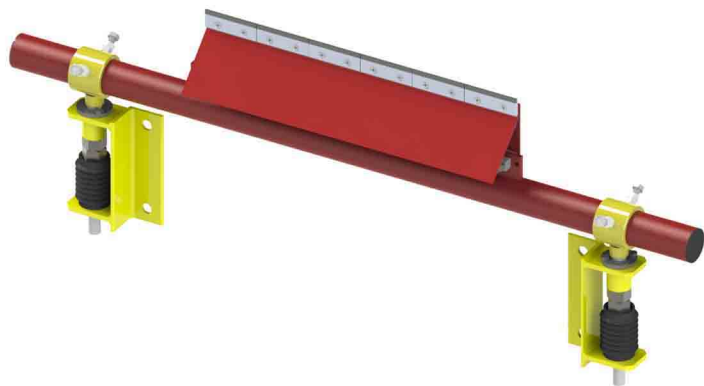
BELT SPEED	SUITABLE BELT	CONVEYING MATERIAL
≤ 6.5 m/s	One-Way Operating Flat Surface	Coal, Coke, Iron Ore, Sandstone, Fertilizer, Limestone, Salt, etc.
≤ 6.5 m/s	One-Way Operating Flat Surface	Coal, Coke, Iron Ore, Sandstone, Fertilizer, Limestone, Salt, Slag, Sinter, Sulfur, etc.
≤ 6.5 m/s	Reversible Operating Flat Surface	Coal, Coke, Iron Ore, Sandstone, Fertilizer, Limestone, Salt, etc.
≤ 6.5 m/s	Reversible Operating Flat Surface	Coal, Coke, Iron Ore, Limestone, etc.

RTAM Rubber Torsion Arm Mounting

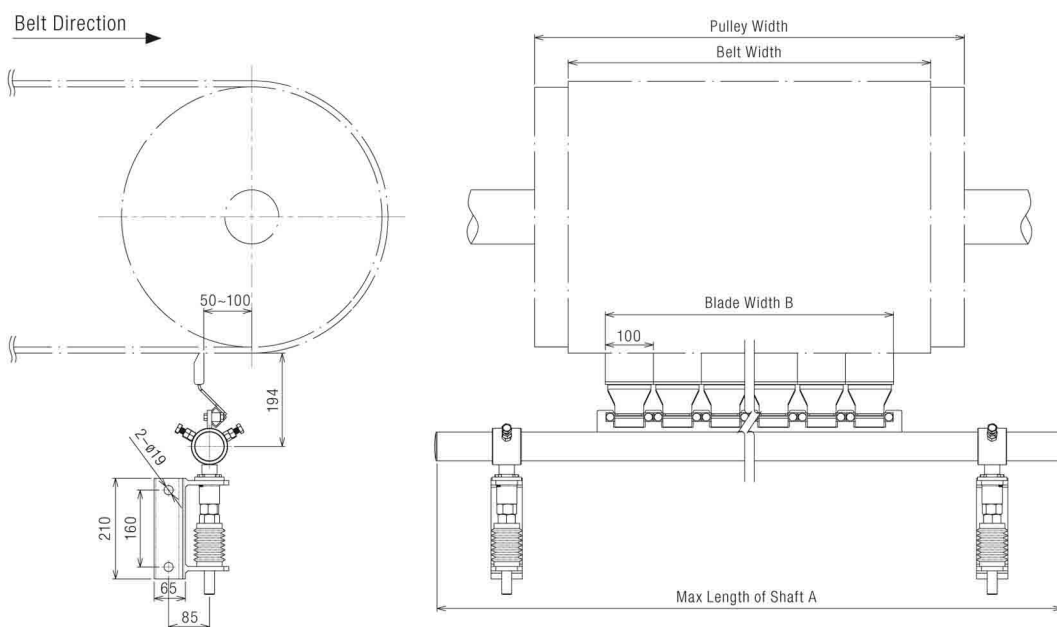


**SRTS's blade with
RTAM**

SECONDARY BELT CLEANER – SRTS



Tungsten Carbide Blade
SRTS



Model	Belt Width	Max Length of Shaft A	Blade Width B
-060	600 [24]	1650 [65]	500 [20]
-065	650 [26]	1750 [69]	600 [24]
-075	750 [30]	1800 [71]	700 [28]
-080	800 [31]	1900 [75]	700 [28]
-090	900 [35]	1950 [77]	800 [32]
SRTS -100	1000 [40]	2100 [83]	900 [35]
-105	1050 [42]	2150 [85]	1000 [39]
-120	1200 [48]	2250 [89]	1100 [43]
-140	1400 [54]	2450 [96]	1300 [51]
-160	1600 [63]	2750 [108]	1500 [59]
-180	1800 [72]	2950 [116]	1700 [67]
-200	2000 [78]	3150 [124]	1900 [75]

FEATURES

SPECIAL BLADE

Simple structure of blade saves cost. Furthermore, each blade with their own RTAM ensures each one to achieve good scraping performance.

HIGH PERFORMANCE RTAM

Design of RTAM solves locking problem from material accumulation.

BLADE OPTIONS

Based on different humid and adhesive environment, PU blades, tungsten carbide blades and ceramic blades are alternatives.

SAVE MAINTENANCE COST

It is easy to maintain the spring tensioners, only by adjusting screws.

APPLICATION

Suitable for conveying material, such as coal, coke, sinter, salt, iron ore, fertilizer, furnace stone, limestone, sandstone, sulfur, etc.

Unit: mm [in]

TIP Q'TY [N]

5

6

7

7

8

9

10

11

13

15

17

19

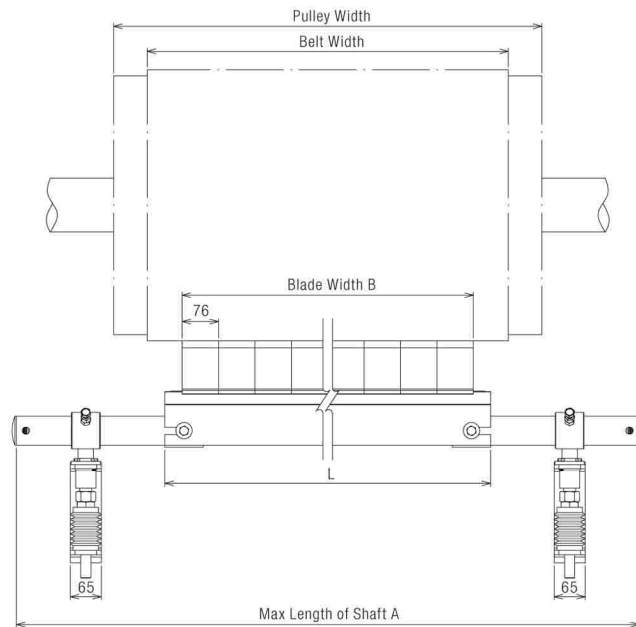
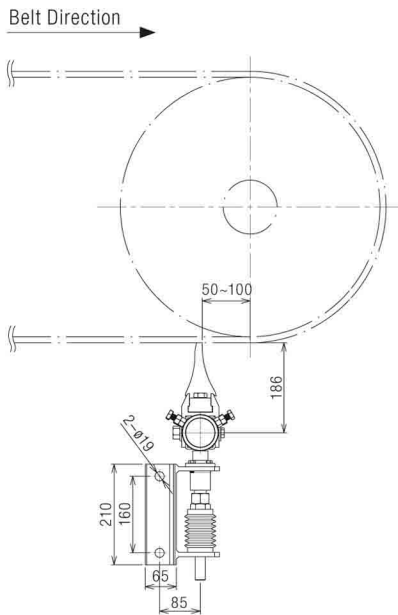
SECONDARY BELT CLEANER – SBC2, SUC2



Tungsten Carbide
Blade – SBC2



Polyurethane
Blade – SUC2



Model	Belt Width	Max Length of Shaft A	Blade Width B
-060	600 [24]	1650 [65]	500 [17]
-065	650 [26]	1750 [69]	550 [22]
-075	750 [30]	1800 [71]	650 [25]
-080	800 [31]	1900 [75]	700 [28]
-090	900 [35]	1950 [77]	800 [31]
SBC2 -100	1000 [40]	2100 [83]	900 [35]
SUC2 -105	1050 [42]	2150 [85]	950 [38]
-120	1200 [48]	2250 [89]	1000 [40]
-140	1400 [54]	2450 [96]	1200 [47]
-160	1600 [63]	2750 [108]	1400 [55]
-180	1800 [72]	2950 [116]	1600 [63]
-200	2000 [78]	3150 [124]	1800 [71]

FEATURES

LONGER LIFETIME

Vulcanized with tungsten carbide, rubber made blades have longer lifetime.

EXCELLENT ELASTICITY AND STRENGTH

By elasticity of rubber, blades constantly contact with belt under suitable pressure to achieve better scraping performance. In addition, rubber can avoid belt from damage of blade by absorbing external force.

EASY INSTALLATION

By modular design, it is easy to install.

SAVE MAINTENANCE COST

It is easy to maintain the spring tensioners, only by adjusting screws.

APPLICATION

Suitable for conveying material, such as coal, coke, sinter, salt, iron ore, fertilizer, limestone, sandstone, sulfur, etc.

Unit: mm [in]

TIP Q'TY [N]

10

11

13

14

16

18

19

20

24

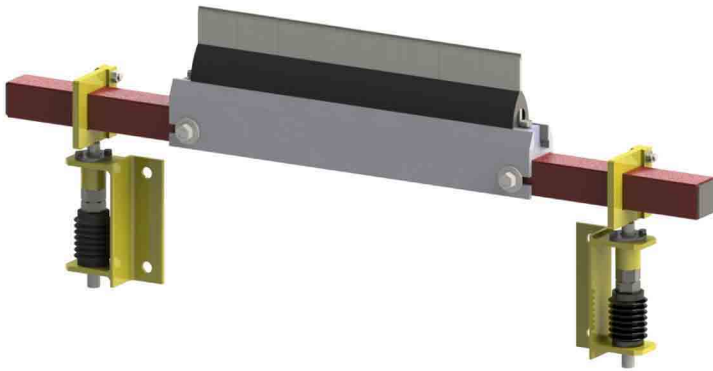
28

32

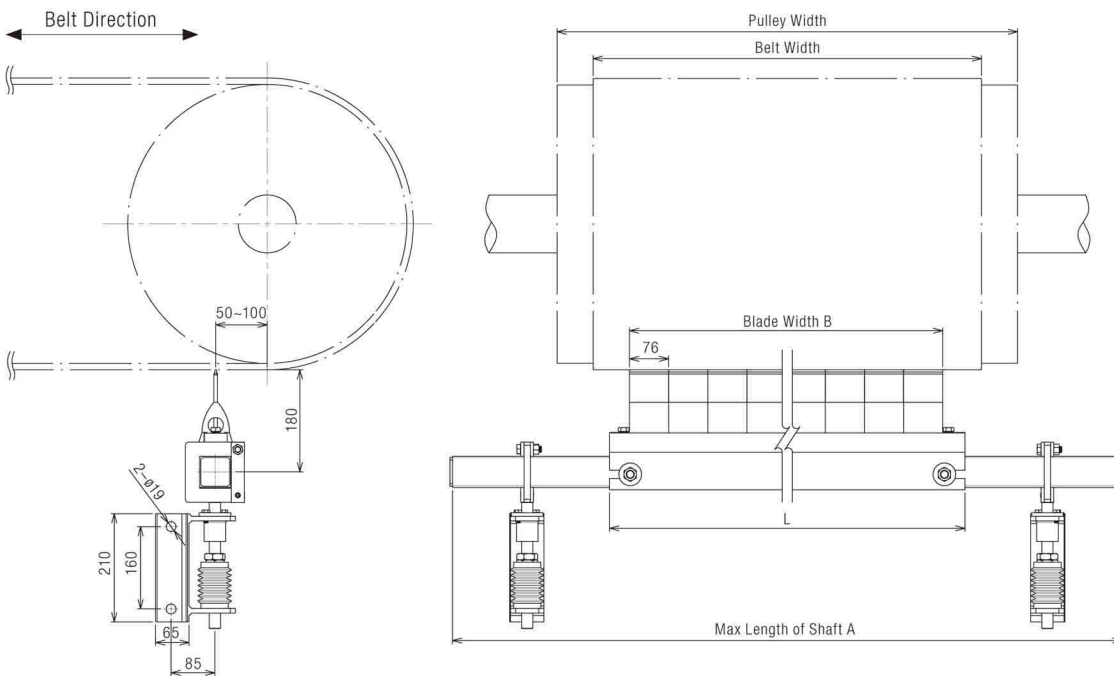
36



REVERSIBLE BELT CLEANER – SBC2D



Reversible Tungsten Carbide Blade SBC2D



Model	Belt Width	Max Length of Shaft A	Blade Width B
-060	600 [24]	1650 [65]	532 [21]
-065	650 [26]	1750 [69]	608 [24]
-075	750 [30]	1800 [71]	684 [27]
-080	800 [31]	1900 [75]	760 [30]
-090	900 [35]	1950 [77]	836 [33]
SBC2D -100	1000 [40]	2100 [83]	912 [36]
-105	1050 [42]	2150 [85]	988 [39]
-120	1200 [48]	2250 [89]	1140 [45]
-140	1400 [54]	2450 [96]	1292 [51]
-160	1600 [63]	2750 [108]	1444 [57]
-180	1800 [72]	2950 [116]	1748 [69]
-200	2000 [78]	3150 [124]	1900 [75]

FEATURES

LONGER LIFETIME

Vulcanized with tungsten carbide, rubber made blades have longer lifetime.

EXCELLENT ELASTICITY AND STRENGTH

By elasticity of rubber, blades constantly contact with belt under suitable pressure to achieve better scraping performance. In addition, rubber can avoid belt from damage of blade by absorbing external force.

REVERSIBLE

Blades are suitable for reversible belt conveyor.

EASY

By modular design, screw tensioners are easy to install and maintain.

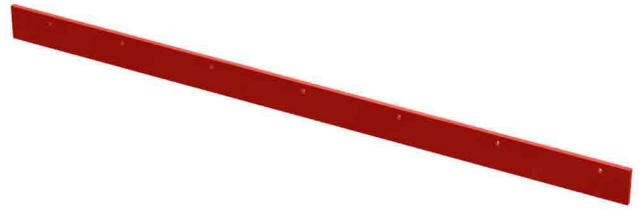
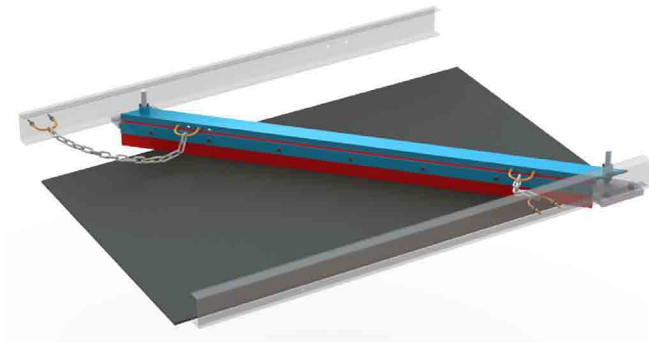
APPLICATION

Suitable for conveying material, such as coal, coke, sinter, salt, iron ore, fertilizer, limestone, sandstone, sulfur, etc.

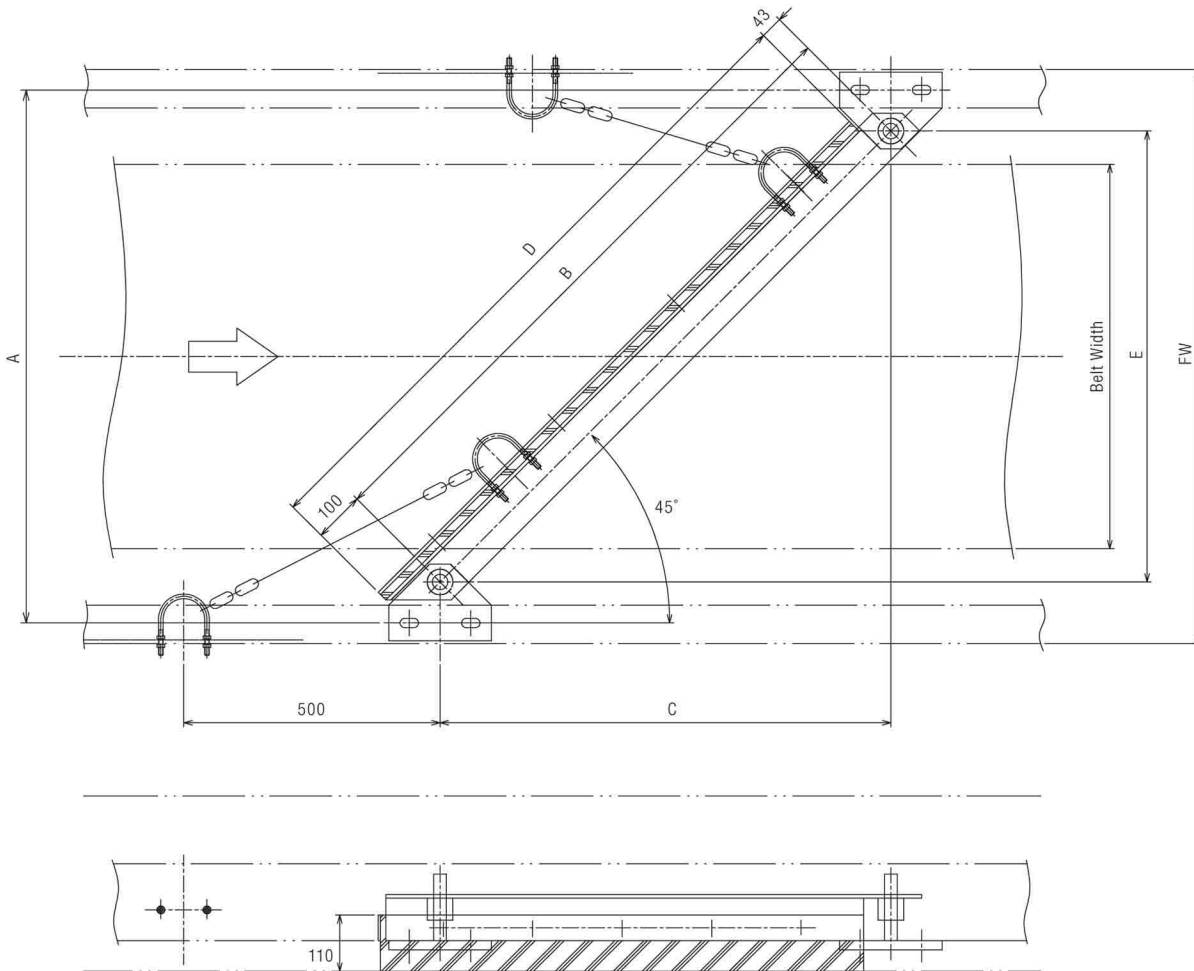
Unit: mm [in]

L	TIP Q'TY [N]
613 [25]	7
690 [28]	8
766 [31]	9
842 [34]	10
918 [37]	11
995 [40]	12
1071 [43]	13
1223 [49]	15
1375 [55]	17
1604 [64]	19
1833 [73]	23
1985 [79]	25

PLOW TYPE BELT CLEANER – NNC



Polyurethane Blade
NNC



Model	Belt Width	A	B
-060	600	840	900
-075	750	1040	1245
-090	900	1190	1456
NNC -105	1050	1340	1669
-120	1200	1490	1881
-140	1400	1730	2220
-160	1600	1930	2530
-180	1800	2220	2913

FEATURES

NO REMAINING MATERIAL

The scraper makes no remaining material on blade to keep the good scarping performance.

LONGER LIFETIME

Reduced the remaining material on the pulley not only avoids the belt deflection, but also extends the belt service life.

PU BLADE

The PU blade makes the belt surface to achieve better scraping performance.

EASY INSTALLATION

Combined with a scraper and the plate, it is easy to install.

APPLICATION

Suitable for conveying material, such as coal, coke, sinter, salt, iron ore, fertilizer, etc.

Unit: mm

C	Blade Width D	E
700	1047	700
880	1300	880
1030	1510	1030
1180	1726	1180
1330	1938	1330
1570	2300	1570
1770	2580	1770
2060	2990	2060



Gumi Tel-Aviv

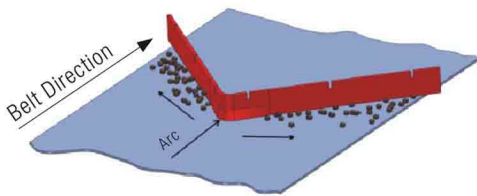
מוצרי גומי, פלסטיקה הנדסית וחומרי אטימה לתעשייה

רח' המשביר, 10 חולון 58855 טל. (רב-קווי): 03-5599703, 7357700
 מקס. 03-5582111, 5599702 Fax. מען למכתבים: ת.ד. 1858, חולון 58117
 כתובתנו באינטרנט: Web Site: www.gta.co.il, E-mail: gumi@gumi.co.il

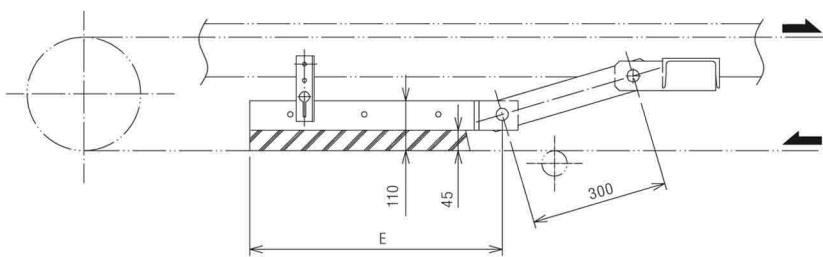
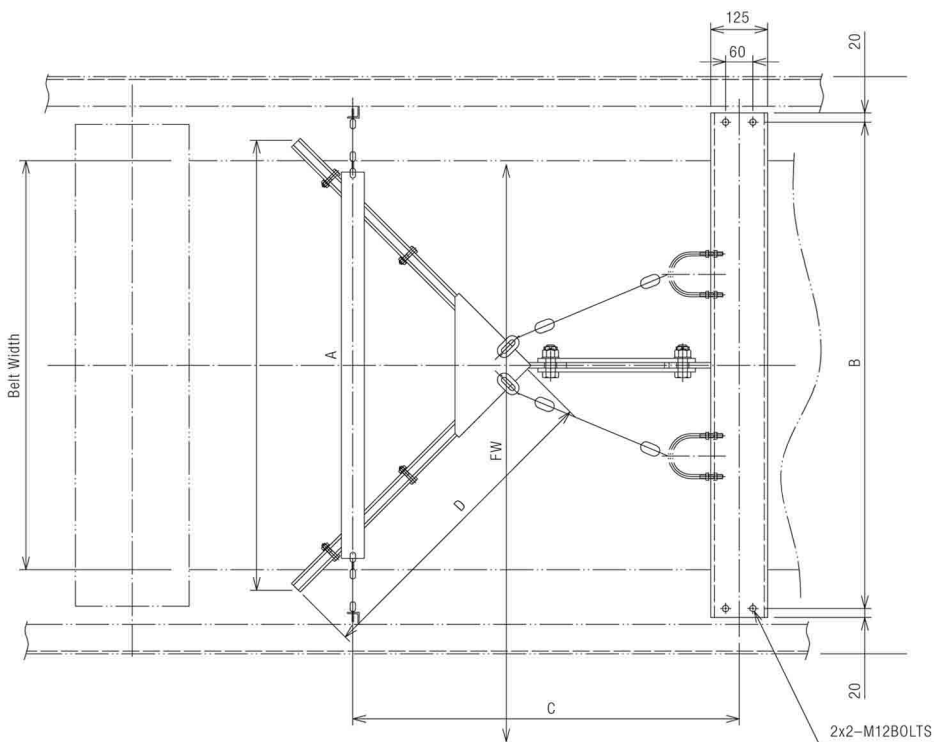


V-PLOW BELT CLEANER – NVC

Patent



Polyurethane Blade
NVC



Model	Belt Width	A	B
-060	600	660	720
-075	750	850	920
-090	900	990	1070
-105	1050	1140	1220
NVC -120	1200	1300	1370
-140	1400	1500	1610
-160	1600	1700	1810
-180	1800	1920	2100
-200	2000	2120	2300

FEATURES

NO REMAINING MATERIAL

The scraper makes no remaining material on blade to keep the good scarping performance.

LONGER LIFETIME

Reduced the remaining material on the pulley not only avoids the belt deflection, but also extends the belt service life.

ARC DESIGN

With the front-end cleaner arc design of the scraper, the belt surface achieves better scraping performance.

EASY INSTALLATION

Combined with a scraper and the plate, it is easy to install.

APPLICATION

Suitable for conveying material, such as coal, coke, sinter, salt, iron ore, fertilizer, etc.

Unit: mm

C	Blade Width D	E
670	466	390
800	600	485
850	700	555
950	810	633
1000	900	710
1260	1060	810
1360	1200	910
1510	1358	1020
1510	1499	1135



Gumi Tel-Aviv

מוצרי גומי, פלסטיקה הנדסית וחומרי אטימה לתעשייה

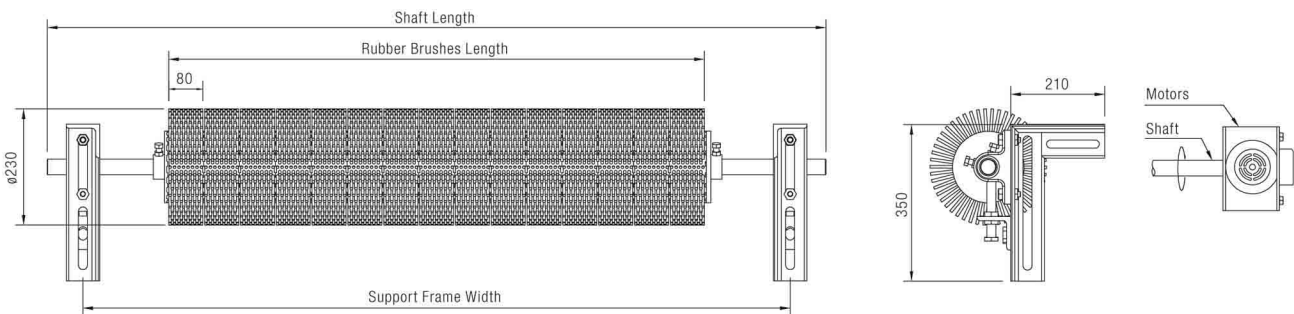
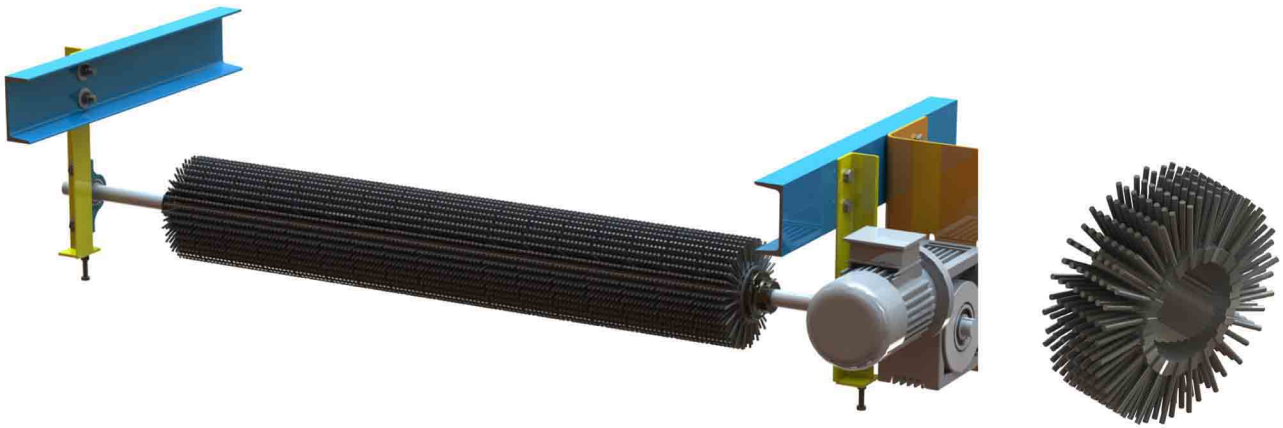
רח' המשביר, 10 א.ת. חולון 58855 טל. (רב-קווי): 7357700, 03-5599703
 מקס. 5599702, 03-5582111 Fax. מען למכתבים: ת.ד. 1858, חולון 58117
 כתובתנו באינטרנט: Web Site: www.gta.co.il, E-mail: gumi@gumi.co.il



RUBBER BRUSH BELT CLEANER

RUBBER BRUSH CLEANER WITH GEAR BOX

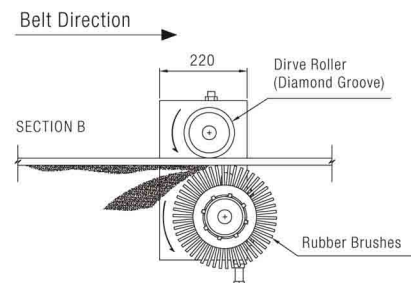
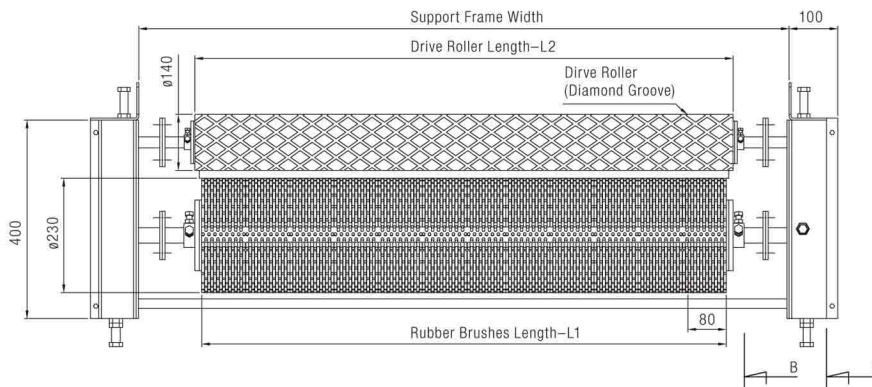
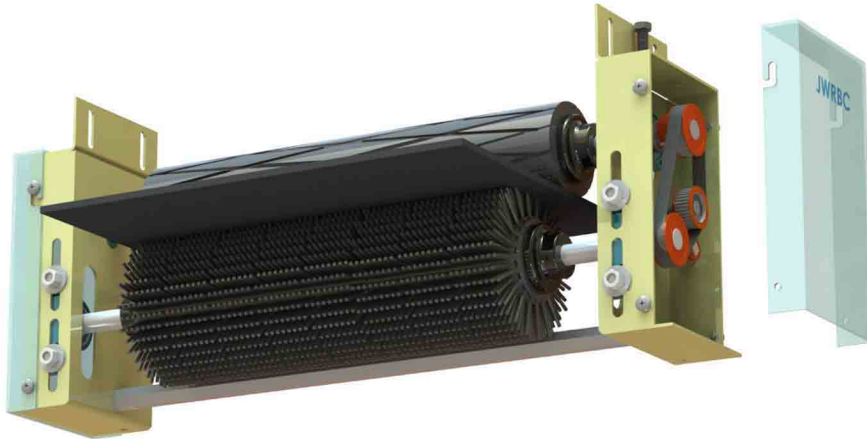
Without a hold-down roller, the rubber brush cleaner works when the belt runs. For better cleaning function, it can be installed with a motor. In addition to easy installation in even sever jobsite, the rubber brush cleaner can be maintained quickly by only replacing rubber brushes.



Model	Belt Width	Rubber Brushes Length-L1
-060	600 [24]	530 [21]
-065	650 [26]	610 [24]
-075	750 [30]	690 [27]
-080	800 [31]	760 [30]
-090	900 [35]	840 [33]
RBC -100	1000 [40]	920 [36]
-105	1050 [42]	990 [42]
-120	1200 [48]	1140 [45]
-140	1400 [54]	1300 [51]
-150	1500 [60]	1450 [57]
-160	1600 [63]	1520 [60]
-180	1800 [72]	1600 [63]
-200	2000 [78]	1830 [72]

RUBBER BRUSH CLEANER WITH GEAR BOX

Making use of theory of gear driving, by a diamond-grooved lagging hold-down roller upward, the rubber brush cleaner is driven to rotate in reversed direction from belt's to flick carryback off the belt. It is a better choice for wet sand belts, wood chip belts.



Unit: mm [in]

Drive Roller Length-L2	TIP Q'TY [N]
650 [26]	7
700 [28]	8
800 [31]	9
850 [34]	10
950 [37]	11
1050 [41]	12
1100 [43]	13
1250 [49]	15
1450 [57]	17
1550 [61]	19
1650 [65]	20
1850 [73]	21
2050 [81]	24

RUBBER BRUSH

Special for chevron, vee ridge, and cleated belts.

Through high-elastic hundreds rubber fingertips, incrustation left on belt surface is removed efficiently. Moreover, those fingertips are molded from SBR that provides abrasion resistance for longer service life.

החברה
המחויבת
לעשייה





01.

STEEL IDLER / HDPE IDLER

- Steel Roller
- HDPE Roller
- Wing Roller
- Unwelded Steel Roller
- Spiral Return Idler
- Rubber Disc Return Idler



HDPE ROLLER

Compared to general HDPE, **our HDPE-Complex in special formula has higher tensile strength and higher impact strength.**

FEATURES

- Longer Lifetime.
- Abrasion and Corrosion Resistance.
- Light Weight and Power Saving.
- Low Decibel and Higher Safety.
- Minimum Belt Damage.
- Low Incrustation.
- Dust-Proof and Water-Proof.
- 50% Lighter than Steel Roller.
- Low Friction.
- Available in CEMA C & D Classes.

ECO-FRIENDLY

HDPE only leaves non-toxic and bland recycling Carbon Dioxide and Hydrogen Oxide after completely burned.

GLOBAL WARMING! USE HDPE ROLLER TO SAVE OUR EARTH!



HDPE Material

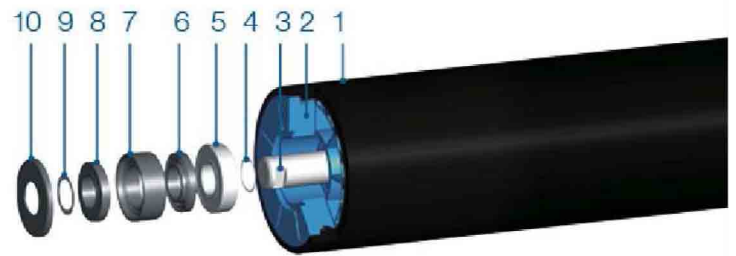


HDPE Pipe



HDPE Roller

- 01 Shell
- 02 Bearing Housing
- 03 Shaft
- 04 Clasp Ring
- 05 Bearing
- 06 Inner Labyrinth Seal (3 in 1)
- 07 Mid Labyrinth Seal (3 in 1)
- 08 Outer Labyrinth Seal (3 in 1)
- 09 Snap Ring
- 10 Dust-Proof and Water-Proof Cover Cap



**CARRYING
HDPE
ROLLER**



**RETURN
HDPE
ROLLER**



ROLLER DIMENSION

JIS		Bearing No.	
Pipe DIA.	Shaft DIA.	Standard	Heavy Duty
ø 89.1	ø 20	6204 2RS	–
ø 114.3	ø 20 / ø 25	6204 2RS / 6205 2RS	–
ø 139.8	ø 25 / ø 30	6205 2RS / 6206 2RS	6305 2RS
ø 165.2	ø 30 / ø 35	6206 2RS / 6207 2RS	6306 2RS / 6207 2RS

CEMA		Bearing No.	
Pipe DIA.	Shaft DIA.	Standard	Heavy Duty
ø 101.6 [4"]	ø 20	6204 2RS	–
ø 127 [5"]	ø 20 / ø 25 / ø 30	6204 2RS / 6205 2RS / 6206 2RS	6305 2RS
ø 152 [6"]	ø 30 / ø 35	6206 2RS / 6207 2RS	6305 2RS / 6306 2RS

ISO, DIN		Bearing No.	
Pipe DIA.	Shaft DIA.	Standard	Heavy Duty
ø 89.1	ø 20	6204 2RS	–
ø 108	ø 20 / ø 25	6204 2RS / 6205 2RS	–
ø 133	ø 25 / ø 30	6205 2RS / 6206 2RS	6305 2RS
ø 159	ø 25 / ø 30 / ø 35	6205 2RS / 6206 2RS / 6207 2RS	6305 2RS / 6306 2RS

STEEL ROLLER

Jim Way's idlers, with superior quality, are suitable for the maximum load capacity. **The 4 in 1 labyrinth seals not only protect the bearing but also provide maximum effectiveness and long lifetime even under tough condition.** Conscientious Incoming quality control, In-process quality control, and Outgoing quality control allow us to bring the best quality idlers for customers around the world.

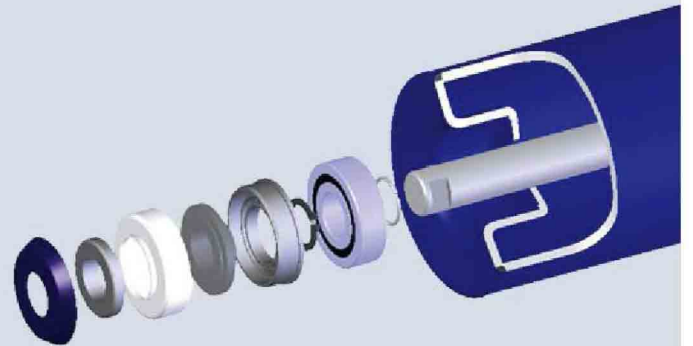


ECO-FRIENDLY POWDER COATING TECHNIQUE

The thickness of coating more than 70µm avoids idler surface from damage and rust, and increases the lifetime of idler. By protecting belt from leaping and deflection, and non-incrustation on idlers, the lifetime of belt is longer, and thus the maintenance cost is reduced. Besides protecting the Earth by recycling the powder and reducing pollution, the powder coating can provide beautiful luster.

AUTOMATIC SYNCHRONIZED BILATERAL-WELDING

By the technique between the pipe ends and bearing housing, the outstanding balance and strength avoid the bearing housings separated due to overloading.



ROLLER DIMENSION

JIS		Bearing No.	
Pipe DIA.	Shaft DIA.	Standard	Heavy Duty
ø 89.1	ø 20	6204 2RS	-
ø 114.3	ø 20 / ø 25	6204 2RS / 6205 2RS	-
ø 139.8	ø 25 / ø 30	6205 2RS / 6206 2RS	6305 2RS / 6306 2RS
ø 165.2	ø 30 / ø 35	6206 2RS / 6207 2RS	6306 2RS / 6307 2RS

CEMA		Bearing No.	
Pipe DIA.	Shaft DIA.	Standard	Heavy Duty
ø 101.6 [4"]	ø 20	6204 2RS	-
ø 127 [5"]	ø 20 / ø 25 / ø 30	6204 2RS / 6205 2RS / 6206 2RS	6305 2RS / 6306 2RS
ø 152 [6"]	ø 30 / ø 35	6206 2RS / 6207 2RS	6306 2RS / 6307 2RS

ISO, DIN		Bearing No.	
Pipe DIA.	Shaft DIA.	Standard	Heavy Duty
ø 89.1	ø 20	6204 2RS	-
ø 108	ø 20 / ø 25	6204 2RS / 6205 2RS	6304 2RS / 6305 2RS
ø 133	ø 25 / ø 30	6205 2RS / 6206 2RS	6305 2RS / 6306 2RS
ø 159	ø 30 / ø 35	6206 2RS / 6207 2RS	6306 2RS / 6307 2RS

RETURN ROLLER

Material is particularly adhered to belt surface if the conveying material is sticky, or in highly humid environment that results in accumulation, equipment damaged, or belt transverse-displacement. **Rollers with rubber discs help efficiently avoid build-up on the belt and incrustations on rollers.**

SPIRAL RETURN IDLER

PU spiral rollers not only sustain belt, but also help remove incrustations on belt surface that are very suitable for conveying sticky material. Because of high volume of removed material, the position of spiral rollers where easy to clean removed material, or whether material-guides should be installed are necessary to consider. Furthermore, spiral rollers are highly suggested installed close to loading zone to avoid pollution at the end of conveyor.



RUBBER DISC RETURN IDLER

TYPE 1

With anti-wear and high-elastic rubber discs, it is suitable for conveying sticky or corrosive material. It removes the fine grain or powdery material adhered to belt surface, and thus protects belt from transverse-displacement.



TYPE 2

With better wear-resistant polyurethane discs, it is suitable for conveying high-sticky or high abrasive material.



TYPE 3

With polyurethane discs and ceramic discs, it is suitable for conveying high abrasive, high sticky or high corrosive material, such as sinter, coke, salt, limestone, furnace slag, water quenching slag, etc.



TYPE 4

With better wear-resistant polyurethane discs, it is suitable for conveying high-sticky or high abrasive material.



APPLICATION ON CONVEYING HIGH CORROSIVE AND HUMID MATERIAL

When conveying high corrosive and humid material such as coke, sinter, furnace flat, or bottom ash, rollers with steel pipe, rubber discs or PU discs are in a very short service life and replaced highly frequently. Moreover, rollers, which may be broken from extreme abrasion, result to direct damage to belt and to increase high maintenance cost.

▼
Ceramic discs cover on rollers help solve the problems and reduce the turnover. Besides of avoiding incrustation, **the smooth surface of ceramic ensures belt smooth operation.**



APPLICATION ON INCRUSTATION PRODUCED EASILY

When incrustation covered on steel rollers, it is easy to cause belt jump and even transverse displacement.

▼
Return rollers with discs reduce the frequency of incrustation produced which result in reducing the frequency of cleaning and maintenance labor cost. It is very suitable for narrow operation space or hard cleaning operation environment.



WING ROLLER

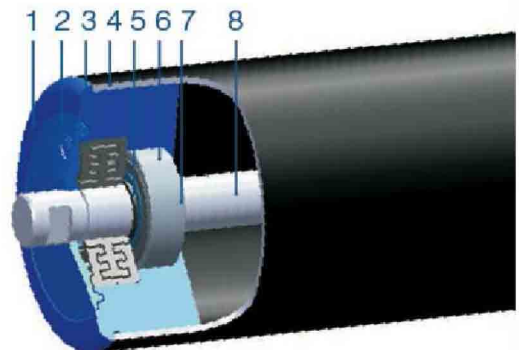


UNWELDED STEEL ROLLER

Traditional steel rollers are heavy for maintenance people carrying. In order to solve the problem, **Jim Way provides Unwelded Steel Roller that the bearing housing is made of plastic to reduce weight.** With high-quality surface treatment of powder coating on steel tube, it is high anti-corrosion. **Combined with each features of steel roller and plastic roller, Unwelded Steel Roller is even in reasonable price.**



- 01 COVER
- 02 **ENGINEERING PLASTIC BEARING HOUSING**
- 03 LABYRINTH SEAL
- 04 **STEEL TUBE**
- 05 OUT SNAP RING
- 06 BEARING
- 07 IN SNAP RING
- 08 SHAFT

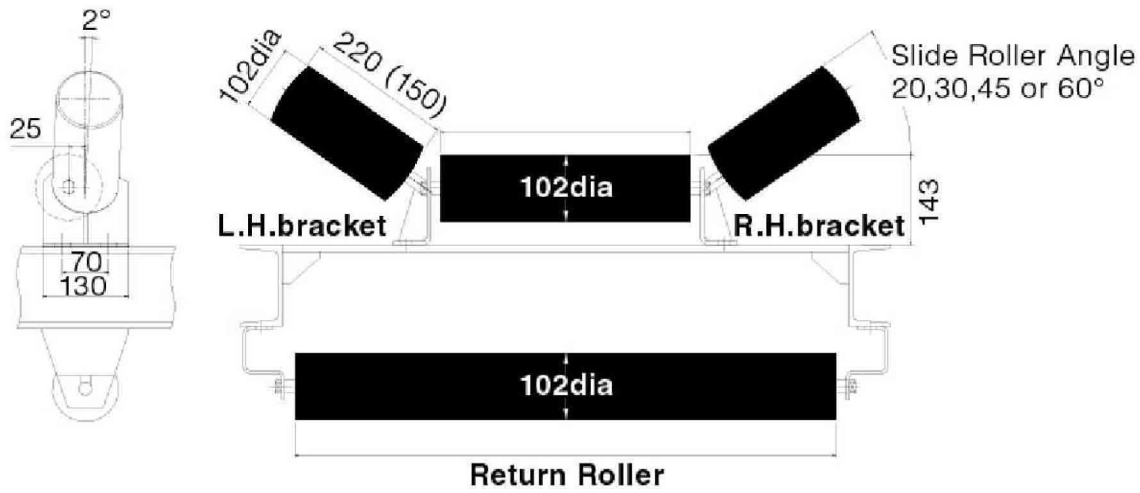


FEATURES

- Reasonable price.
- Longer lifetime.
- Low decibel and high safety.
- Minimum belt damage.
- Low friction.
- Less weight and power saving.
- Dust and water proof.
- Abrasion and corrosion resistance.

CENTRE AND RETURN IDLER

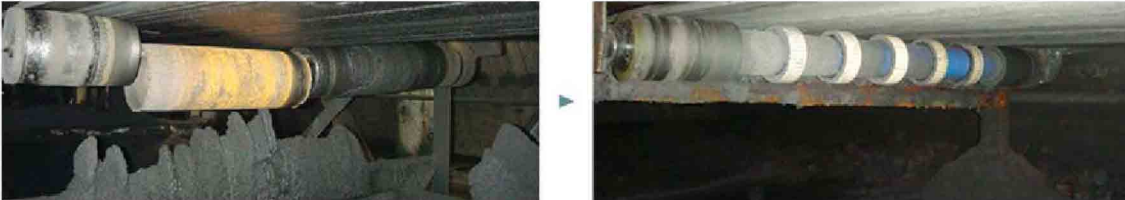
Unit:mm



APPLICATION ON CONVEYING HIGH CORROSIVE AND HUMID MATERIAL

When conveying high corrosive and humid material such as coke, sinter, furnace flat, or bottom ash, rollers with steel pipe, rubber discs or PU discs are in a very short service life and replaced highly frequently. Moreover, rollers, which may be broken from extreme abrasion, result to direct damage to belt and to increase high maintenance cost.

▼ Ceramic discs cover on rollers help solve the problems and reduce the turnover. Besides of avoiding incrustation, **the smooth surface of ceramic ensures belt smooth operation.**



APPLICATION ON INCRUSTATION PRODUCED EASILY

When incrustation covered on steel rollers, it is easy to cause belt jump and even transverse displacement.

▼ **Return rollers with discs reduce the frequency of incrustation produced which result in reducing the frequency of cleaning and maintenance labor cost.** It is very suitable for narrow operation space or hard cleaning operation environment.



QUALITY CONTROL

Water-Proof Test



Dust-Proof Test



Dynamic Balance Test



Friction Resistance Test



Drog and Total Indicator Runout Test (T.I.R.)



החברה
המחויבת
לעשייה





05.

PULLEY RELATED

Replaceable Pulley Lagging
Raised Rubber Retainer
Hot-Vulcanize Pulley Lagging
Ceramic Pulley Lagging



Gumi Tel-Aviv

מוצרי גומי, פלסטיקה הנדסית וחומרי אטימה לתעשייה

רח' המשביר, 10 חולון 58855 טל. (רב-קווי): 7357700, 03-5599703
מקס. 5599702, 03-5582111 Fax. מען למכתבים: ת.ד. 1858, חולון 58117
כתובתנו באינטרנט: Web Site: www.gta.co.il, E-mail: gumi@gumi.co.il



REPLACEABLE PULLEY LAGGING

The rubber lagging material is hot vulcanized to metal backing plates that are welded in sections to the pulley. **The lagging is secured to the pulley with new and patented raised rubber retainers used as the weld point to secure the strips in place.** The system is designed to be installed with the pulley on the conveyor and replacing the strips lagging is as easy as removing the worn sections from the retainers and sliding a new section in. This system requires considerably less installation time when compared to cold bonded or hot vulcanized alternatives.

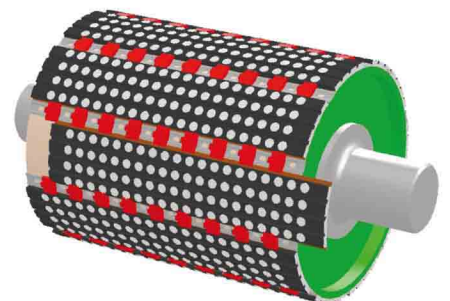
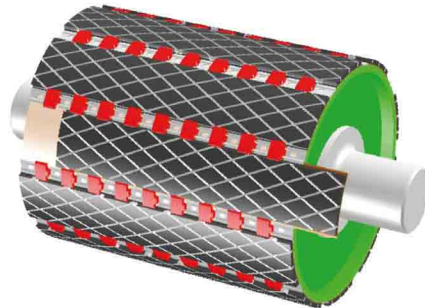
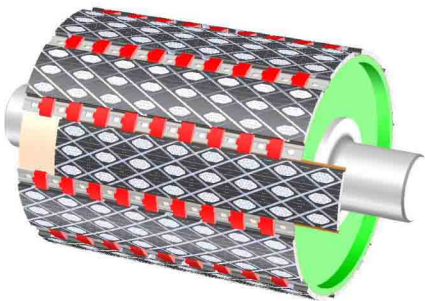
WITH RAISED DIAMOND CERAMIC



WITH DIAMOND GROOVE RUBBER

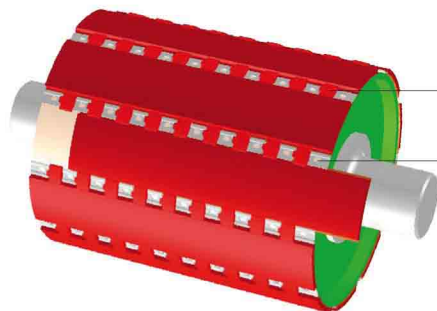


WITH RAISED ROUND CERAMIC



WITH DIAMOND RED RUBBER

High-elasticity and abrasion-resistant



— Raised Rubber Retainer

— Welding Hole

RAISED RUBBER RETAINER

PATENT PENDING



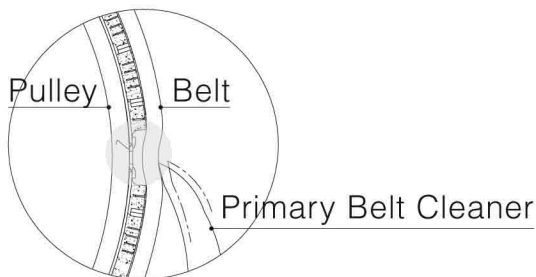
The raised rubber retainers are designed to substantially reduce belt scraper vibration and noise as they eliminate the gap between the lagging sections, providing a smooth running surface as the belt runs over the pulley face. Jim Way Replaceable Lagging is suitable for many different pulleys and will dramatically improve plant operational uptime with extended service life for your conveyor system even at the most demanding applications.

TRADITIONAL RUBBER PULLEY LAGGING



Traditional rubber pulley lagging is provided in rubber sheets that are cut to size and applied to the pulley face through either hot vulcanization process using an autoclave or cold bonding process whereby rubber is secured using a two-step adhesive. **Both application methods are time consuming to install and replacement costs can be extremely high, especially if the pulley has to be removed to perform the work.**

Running Up and Down

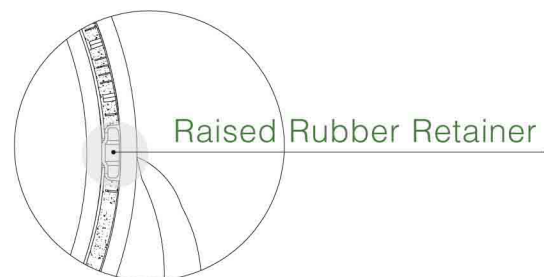


REPLACEABLE PULLEY LAGGING



In order to improve this process, Jim Way has developed a new metal backed replaceable pulley lagging for both drive and passive snub, bend or tail pulleys. The lagging is manufactured **using extremely durable natural rubber available in diamond pattern, smooth rubber, or with ceramic tiles embedded into the rubber to improve drive friction and wear life characteristics.**

Running Smoothly



THE COEFFICIENT OF FRICTION

HUMIDITY OF MATERIAL

COEFFICIENT OF FRICTION

DRY
WET
MUD

GROOVED RUBBER

CERAMIC LAGGING

0.40~0.50

0.70~0.80

0.20~0.25

0.40~0.80

0.18~0.20

0.40~0.50



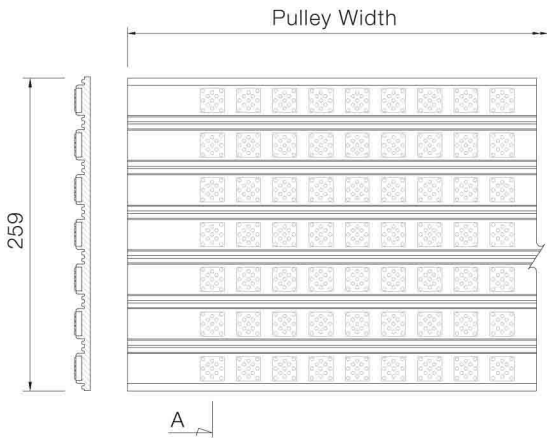
Gumi Tel-Aviv Ltd

מוצרי גומי, פלסטיקה הנדסית וחומרי אטימה לתעשייה
רח' המשביר, 10 א.ת. חולון 58855 טל. (רב-קווי): 7357700, 03-5599703
פקס. 03-5582111, 5599702 מען למכתבים: ת.ד. 1858, חולון 58117
כתובתנו באינטרנט: Web Site: www.gta.co.il, E-mail: gumi@gumi.co.il

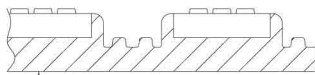
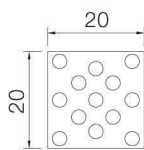
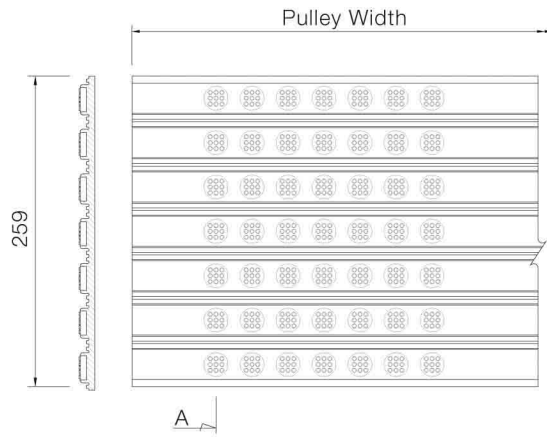


HOT-VULCANIZE PULLEY LAGGING

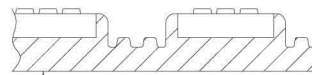
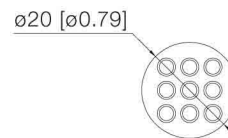
WITH RAISED SQUARE CERAMIC



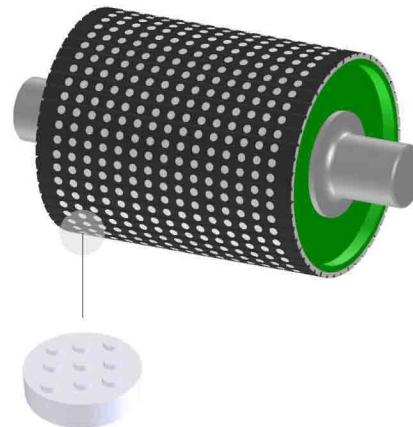
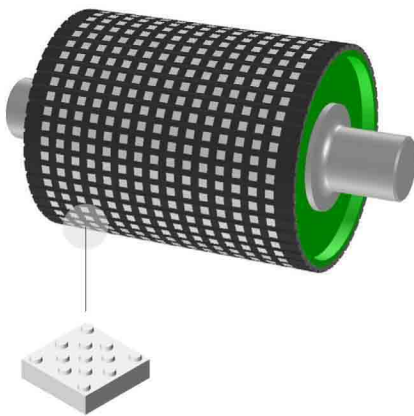
WITH RAISED ROUND CERAMIC



Rubber Hs=55°±5°



Rubber Hs=55°±5°



THE COEFFICIENT OF FRICTION

HUMIDITY OF MATERIAL	COEFFICIENT OF FRICTION	
	GROOVED RUBBER	CERAMIC LAGGING
DRY	0.40~0.50	0.70~0.80
WET	0.20~0.25	0.40~0.80
MUD	0.18~0.20	0.40~0.50

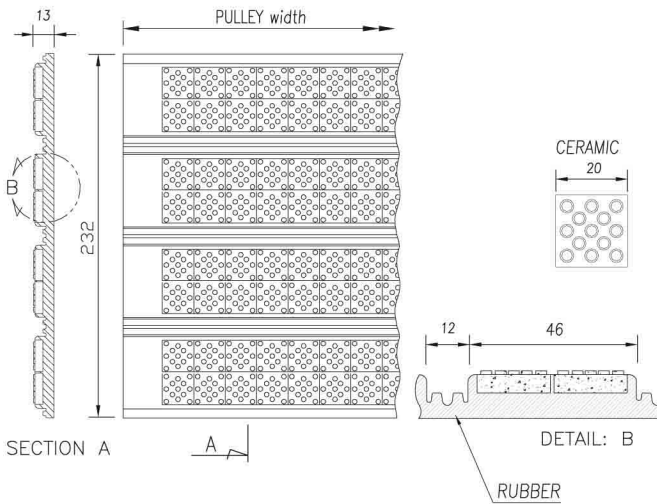
CERAMIC PULLEY LAGGING

FOR DRIVE PULLEY

Raised Dimple Ceramic Tiles

Designed to Increase the coefficient of friction between lagging and belt.

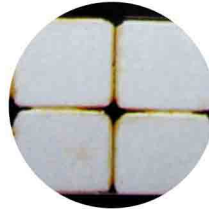
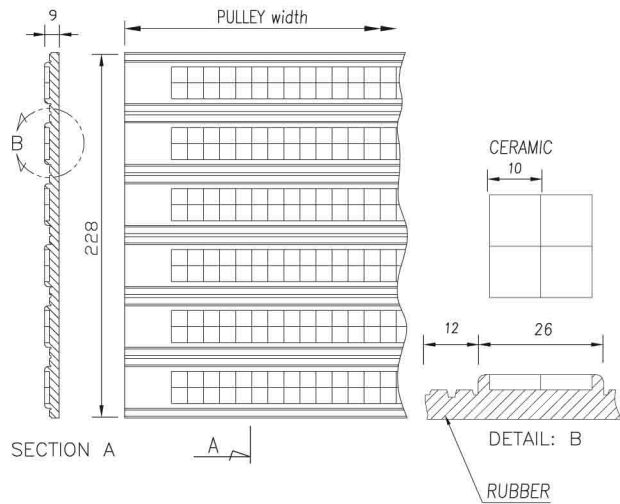
Will provide extended service life of pulley and belt while enabling system to run at lower tension reducing power consumption requirements.



FOR NON-DRIVE SNUB, TAKE-UP AND TAIL PULLEY

Flat Ceramic Tiles

Will reduce wear and extend service life of your non-drive conveyor pulleys.



החברה אינה
מוכרת



Gumi Tel-Aviv

מוצרי גומי, פלסטיקה הנדסית וחומרי אטימה לתעשייה

רח' המשביר, 10 א.ת. חולון 58855 טל. (רב-קווי): 03-5599703, 7357700
מקט. 5599702, 03-5582111 Fax. מען למכתבים: ת.ד. 1858, חולון 58117
כתובתנו באינטרנט: Web Site: www.gta.co.il, E-mail: gumi@gumi.co.il





04.

ABRASION-RESISTANT PRODUCTS

Ceramic Liner



Gumi Tel-Aviv

מוצרי גומי, פלסטיקה הנדסית וחומרי אטימה לתעשייה

רח' המשביר, 10 חולון 58855 טל. (רב-קווי): 7357700, 03-5599703 Tel.
מקט. 5599702, 03-5582111 Fax. מען למכתבים: ת.ד. 1858, חולון 58117
כתובתנו באינטרנט: Web Site: www.gta.co.il, E-mail: gumi@gumi.co.il



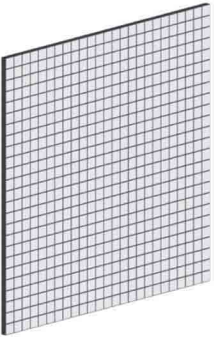
CERAMIC LINER

Bondable Ceramic Liner for Transfer Chutes, Pneumatic Pipe and Non-Drive Pulley Applications

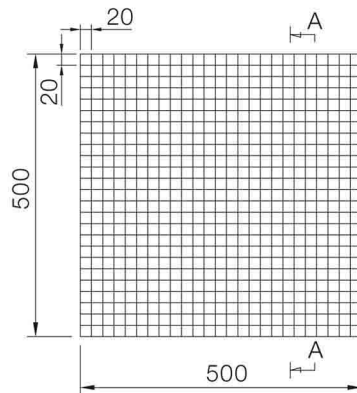


Manufactured of durable aluminium oxide ceramic tiles vulcanized into rubber backing, Jim Way's Bondable Ceramic Lagging can be cold bonded using two step adhesive to any clean steel surface for use inside belt conveyor transfer chutes, and pneumatic slurry pipe applications both in straight, curved and elbow sections. Ceramic liner can also be used **for emergency maintenance to repair perforations of chute sections as well as can be applied to the shell of snub, take-up or tail pulleys to extend pulley service life.**

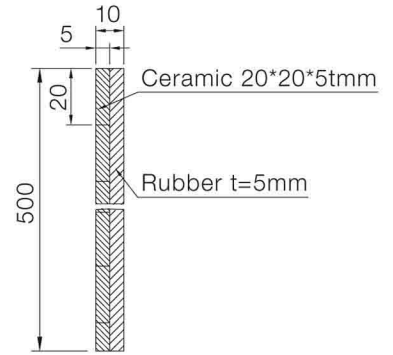
HCRA50010S



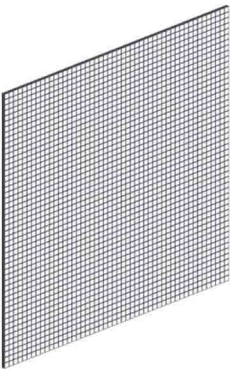
Ceramic Liner-500*500*10t



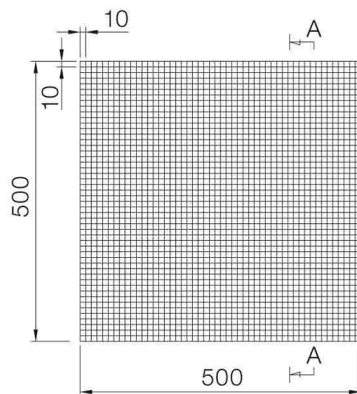
Section A-A



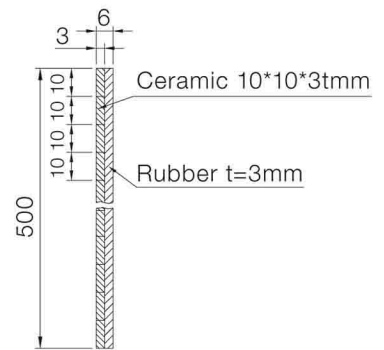
HCRA50006S



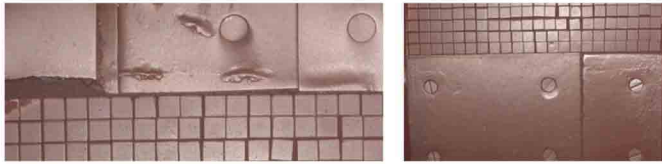
Ceramic Liner-500*500*6t



Section A-A



Replaceable Bolt In Ceramic Liner for Transfer Chutes

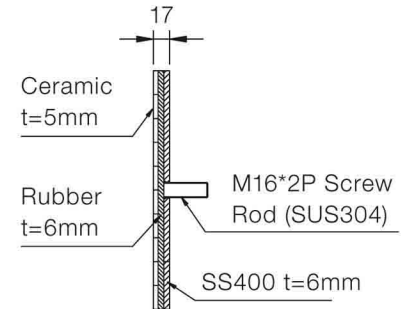
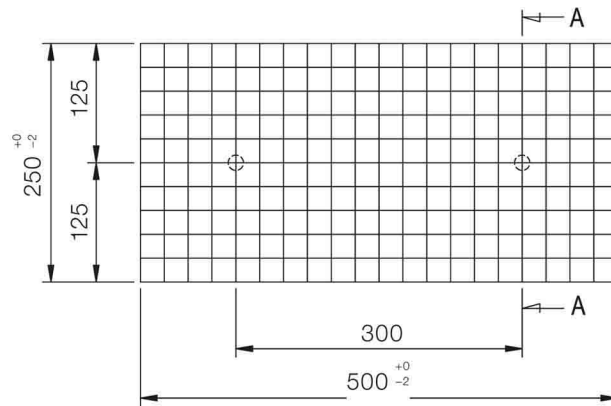


HCL25050005

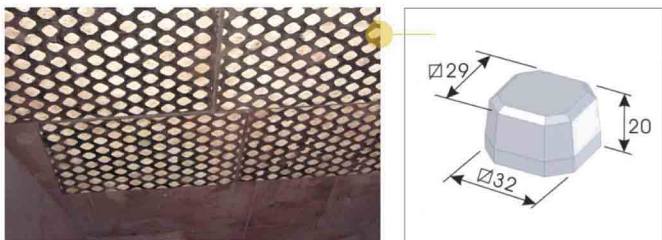
Ceramic Liner

Manufactured of our durable Ceramic Liner which has been bonded to a steel backing plate with mounting bolts for easy installation inside transfer chute.

Section A-A



Replaceable Bolt In Ceramic Liner for Transfer Chute Impact Zones

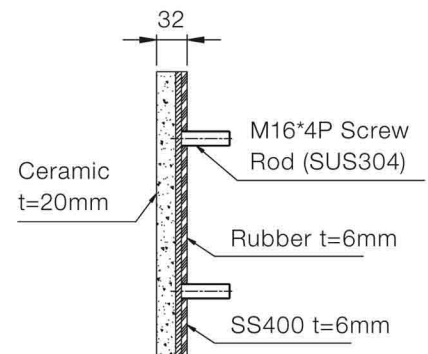
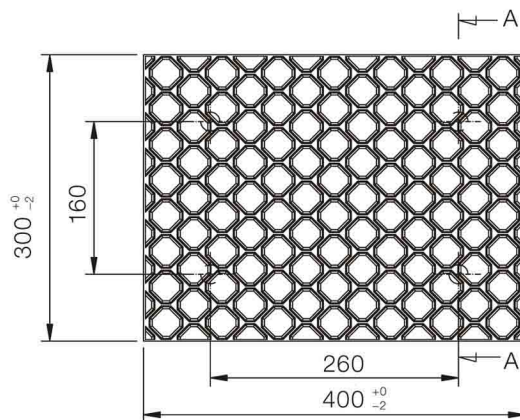


- Manufactured of rigid hexagonal-cone aluminium oxide ceramic tiles vulcanized into rubber and attached to steel backing with mounting bolts for fast and easy installation into transfer chute impact zones.
- Simple installation, and fast and easy replacement will extend the life of transfer chutes currently in service.
- Ceramic tiles offer a smooth surface to avoid material build up in the material path of the transfer chute.

HCRP300400

Ceramic Liner – 500*500*6t

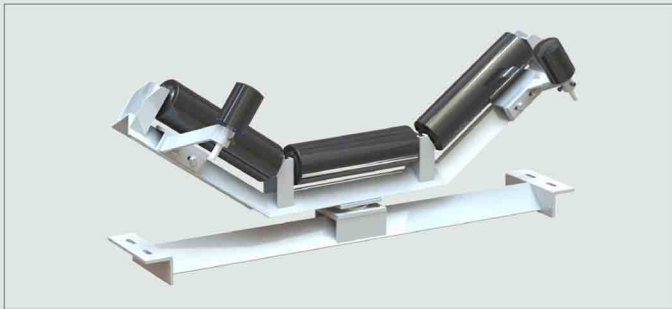
Section A



SELF TRAINING

Carrying Idler / Return Idler

Self-Training Carrying Idler



Self-Training Return Idler



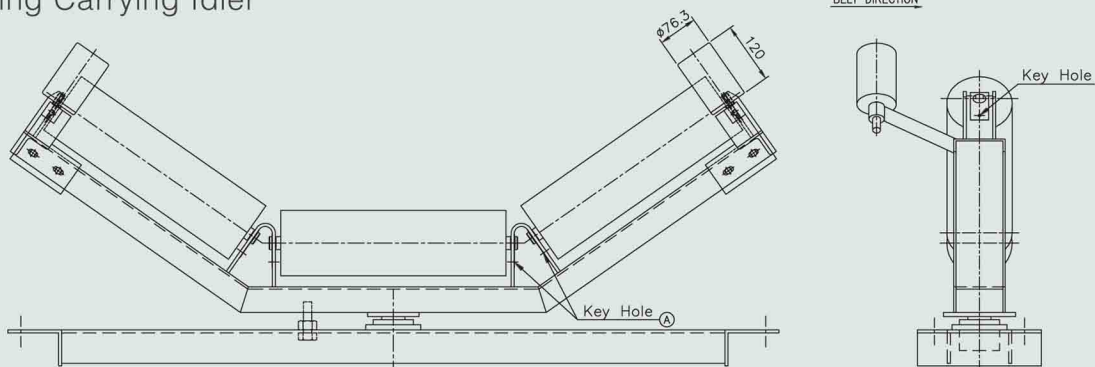
The Self-Training Carrying/Return Idlers are used among normal carrying/return idlers. In the case the belt to miss-aligned due to material accumulation on the belt, unevenly loading or wet condition of bottom of the belt, their upper frames swivel around vertical pivot to center the belt.

SPECIFICATION

Belt Width

20"/24"/30"/36"/42"/48"/54"/60"/72"

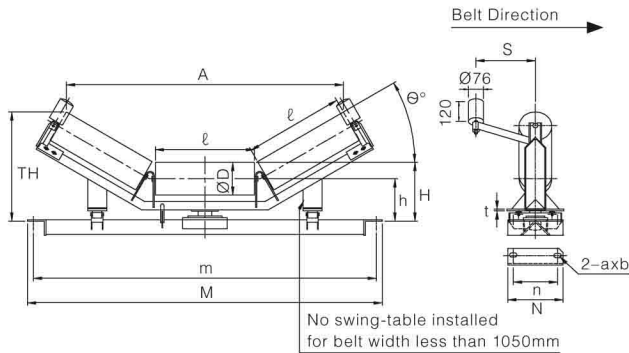
Self-Training Carrying Idler



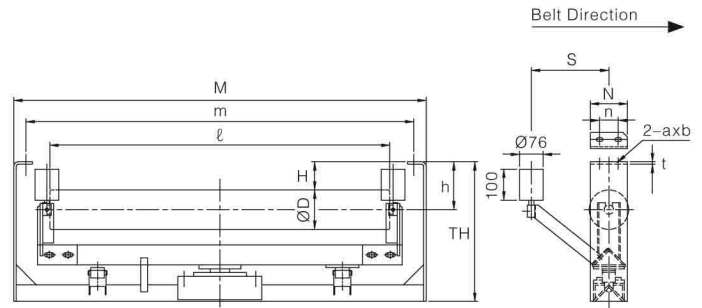
Self-Training Return Idler



Self-Training Carrying Idler JC1T



Self-Training Return Idler JR1T



SPECIFICATION: Self-Training Carrying Idler

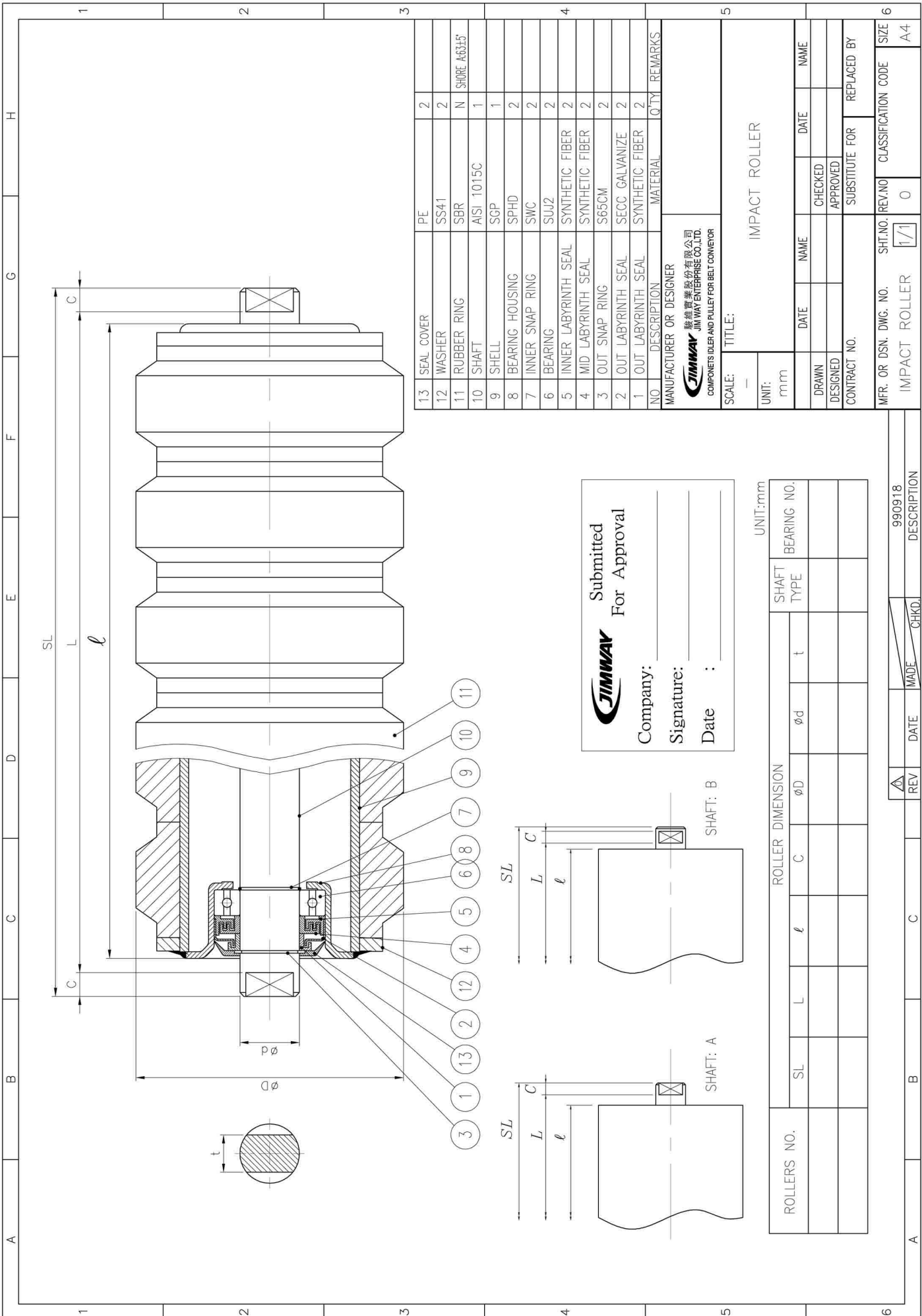
Unit: mm

Model	Belt Width	$\Theta=30^\circ$		$\Theta=35^\circ$		$\Theta=40^\circ$		$\Theta=45^\circ$		S	$\varnothing D$	l	m	M	n	N	h	H	t	axb
		A	TH	A	TH	A	TH	A	TH											
JC1T-040- Θ	400	444	273	427	277	406	286	383	294	200	89.1	145	640	690	140	190	135	180	6	15x25
-045- Θ	450	498	283	480	289	457	299	432	308	200	89.1	165	690	740	140	190	135	180	6	15x25
-050- Θ	500	539	291	519	297	494	309	468	319	200	89.1	180	740	790	140	190	135	180	6	15x25
-060- Θ	600	621	321	583	339	553	353	522	364	200	89.1	210	840	890	150	200	150	195	6	15x25
-075- Θ	750	759	369	730	389	695	406	657	424	250	114.3	265	1040	1090	160	210	160	217	6	15x25
-090- Θ	900	895	394	862	418	821	439	778	459	250	114.3	315	1190	1240	160	210	160	217	6	15x25
-105- Θ	1050	1040	464	1008	492	960	517	908	540	250	139.8	370	1340	1390	180	230	190	260	9	15x25
-120- Θ	1200	1176	489	1140	521	1086	549	1029	575	250	139.8	420	1490	1540	180	230	190	260	9	15x25
-140- Θ	1400	1382	610	1344	648	1281	682	1224	715	300	165.2	500	1730	1790	280	350	265	348	9	19x29
-160- Θ	1600	1601	650	1555	694	1483	733	1417	771	300	165.2	580	1930	1990	280	350	265	348	9	19x29
-180- Θ	1800	1792	715	1735	764	1678	811	1592	852	300	165.2	650	2220	2280	330	400	295	378	9	19x29
-200- Θ	2000	2010	755	1964	810	1880	863	1785	909	300	165.2	730	2420	2480	330	400	295	378	9	19x29


SPECIFICATION: Self-Training Return Idler

Unit: mm

Model	Belt Width	S	$\varnothing D$	l	m	M	n	N	h	H	TH	t	axb
JR1T -040	400	200	89.1	460	640	700	60	105	100	65	310	6	15x25
-045	450	200	89.1	510	690	750	60	105	100	65	310	6	15x25
-050	500	200	89.1	560	740	800	60	105	100	65	310	6	15x25
-060	600	200	89.1	660	840	900	60	105	100	65	310	6	15x25
-075	750	250	114.3	850	1040	1100	60	120	100	53	335	6	15x25
-090	900	250	114.3	1000	1190	1250	60	120	100	53	335	6	15x25
-105	1050	250	139.8	1150	1340	1400	100	185	120	60	400	6	15x25
-120	1200	250	139.8	1300	1490	1550	100	185	120	60	400	6	15x25
-140	1400	300	165.2	1530	1730	1800	120	220	150	77	535	9	19x29
-160	1600	300	165.2	1730	1930	2000	120	220	150	77	535	9	19x29
-180	1800	300	165.2	2000	2220	2290	120	220	150	77	535	9	19x29
-200	2000	300	165.2	2200	2420	2490	120	220	150	77	535	9	19x29



Submitted For Approval



Company: _____

Signature: _____

Date: _____

UNIT: mm

ROLLERS NO.	ROLLER DIMENSION				SHAFT TYPE	BEARING NO.
	SL	L	ℓ	C		
					t	
					φd	
					φD	

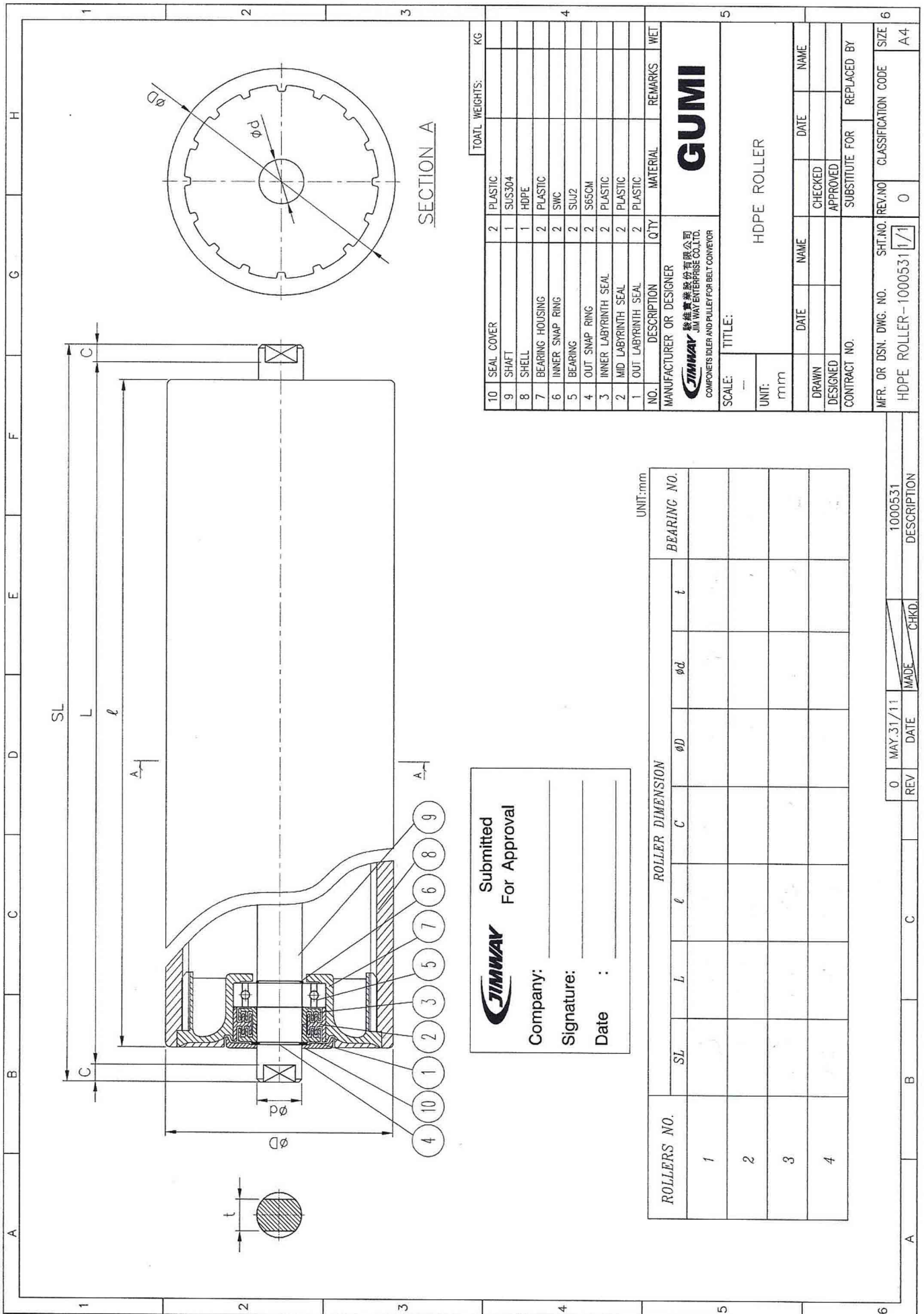
REV	DATE	MADE	CHKD.	DESCRIPTION
				990918



Gumi Tel-Aviv

מוצרי גומי, פלסטיקה הנדסית וחומרי אטימה לתעשייה
 רח' המשביר, 10 א.ת. חולון 58855 טל. (רב-קווין): 7357700, 03-5599703
 מפקס. 03-5582111, 5599702 Fax. מען למכתבים: ת.ד. 1858, חולון 58117
 כתובת באינטרנט: Web Site: www.gta.co.il, E-mail: gumi@gumi.co.il





SECTION A

JIMWAY
 Submitted
 For Approval

Company: _____
 Signature: _____
 Date : _____

UNIT: mm

ROLLERS NO.	ROLLER DIMENSION						BEARING NO.
	SL	L	l	C	φD	t	
1							
2							
3							
4							

NO.	DESCRIPTION	QTY	MATERIAL	REMARKS	WET
10	SEAL COVER	2	PLASTIC		
9	SHAFT	1	SUS304		
8	SHELL	1	HDPE		
7	BEARING HOUSING	2	PLASTIC		
6	INNER SNAP RING	2	SWC		
5	BEARING	2	SUJ2		
4	OUT SNAP RING	2	S65CM		
3	INNER LABYRINTH SEAL	2	PLASTIC		
2	MID LABYRINTH SEAL	2	PLASTIC		
1	OUT LABYRINTH SEAL	2	PLASTIC		

TOTAL WEIGHTS: _____ KG

MANUFACTURER OR DESIGNER
JIMWAY 聯維實業股份有限公司
 JIM WAY ENTERPRISE CO., LTD.
 COMPONENTS IDLER AND PULLEY FOR BELT CONVEYOR

GUMI

SCALE: TITLE: HDPE ROLLER

UNIT: mm

DRAWN: _____ DATE: _____ NAME: _____ CHECKED: _____

DESIGNED: _____ APPROVED: _____

CONTRACT NO. _____ SUBSTITUE FOR: _____ REPLACED BY: _____

MFR. OR DSN. DWG. NO. _____ SHT. NO. REV. NO. _____ CLASSIFICATION CODE _____ SIZE _____

HDPE ROLLER-1000531/1/1 0

החברה אינה
מבטיחה אחריות
על התוכן



Gumi Tel-Aviv

מוצרי גומי, פלסטיקה הנדסית וחומרי אטימה לתעשייה

רח' המשביר, 10 א.ת. חולון 58855 טל. (רב-קווי): 03-5599703, 7357700
מקט. 5599702, 03-5582111 Fax. מען למכתבים: ת.ד. 1858, חולון 58117
כתובתנו באינטרנט: Web Site: www.gta.co.il, E-mail: gumi@gumi.co.il



החברה אינה
מבטיחה אחריות
על התוכן



Gumi Tel-Aviv

מוצרי גומי, פלסטיקה הנדסית וחומרי אטימה לתעשייה

רח' המשביר, 10 א.ת. חולון 58855 טל. (רב-קווי): 03-5599703, 7357700
מקט. 5599702, 03-5582111 Fax. מען למכתבים: ת.ד. 1858, חולון 58117
כתובתנו באינטרנט: Web Site: www.gta.co.il, E-mail: gumi@gumi.co.il





Gumi Tel-Aviv LTD
מפיץ בלעדי בישראל

02.

BELT CLEANER

- Primary Belt Cleaner
- Secondary Belt Cleaner
- Reversible Belt Cleaner
- Rubber Brush Belt Cleaner
- Plow Type Belt Cleaner



מוצרי גומי, פלסטיקה הנדסית וחומרי אטימה לתעשייה

רח' המשביר, 10 א.ת. חולון 58855 טל. (רב-קווי): 7357700, 03-5599703
פקס. 03-5582111, 5599702 Fax. מען למכתבים: ת.ד. 1858, חולון 58117
תוכתנו באינטרנט: Web Site: www.gta.co.il, E-mail: gumi@gumi.co.il