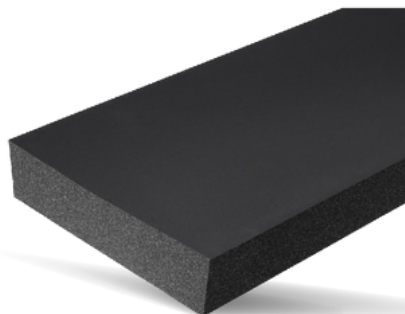


## EPDM 100

- ✓ **Ottimo rapporto qualità/prezzo.**  
*Good value for money.*
- ✓ **Ottima elasticità e impermeabilità all'acqua.**  
*Very good elasticity and water resistance.*



### CAMPI D'IMPIEGO

APPLICATIONS

[IT]	[EN]
• Automotive	• Automotive
• Riscaldamento-condizionamento	• Heating-conditioning
• Ferroviario	• Railway
• Costruzioni (infissi-isolamento)	• Construction (fixtures-insulation)
• Aerospaziale	• Aerospace
• Navale	• Naval
• Macchine movimento terra	• Constructions Equipment
• Macchine Utensili	• Machine tools
• Elettrico	• Electric
• Fotovoltaico	• Photovoltaic
• Energia Eolica	• Wind energy
• Energia Elettrica	• Electric energy
• Sportivo	• Sporty
• Anti-infortunistica	• Safety



### FORMATI DISPONIBILI

AVAILABLE FORM



Rotoli / Rolls



Placche / Sheets



Profili / Profiles











BARRE / BARS



### SPECIFICHE TECNICHE

TECHNICAL DATA SHEET

	NORME / STANDARD	VALORE / RESULTS
 <b>Tipologia Materiale</b> <i>Material Base</i>		EPDM BLEND sulfur free
 <b>Struttura cellulare</b> <i>Cells structure</i>		Cellule Chiuse / Closed Cells
 <b>Colore</b> <i>Color</i>		Nero / Black
 <b>Densità</b> <i>Density</i>	ISO 845	100 ± 20 kg/m <sup>3</sup>
 <b>Carico Deformazione</b> <i>Compression Deflection</i>	ISO 3386	25% 30-60 kPa 50% 80-160 kPa
 <b>Compressione</b> <i>Compression Set</i>	ISO 815-1 23°C, 50% after 24h	< 25%
 <b>Assorbimento Acqua</b> <i>Water Absorption</i>	ISO 6916	< 5%
 <b>Durezza</b> <i>Hardness</i>	ISO 868	35 ± 5 Sh 00
 <b>Temperatura</b> <i>Temperature</i>	Costante / Constant Intermittente / Intermittent	-30°C / +60°C +65°C
 <b>Resistente a</b> <i>Resistance to</i>	Ozono. / Ozone.	
 <b>Certificazioni</b> <i>Certifications</i>	ASTM D1056-07 NFR 99211 FMVSS 302	2A2 2C 08 B3 Passed
 <b>Norme Ambientali</b> <i>Environmental Protection</i>	Riciclabile / Recyclable CFC & HCFC free REACH - RoHS IMDS disponibile / available	